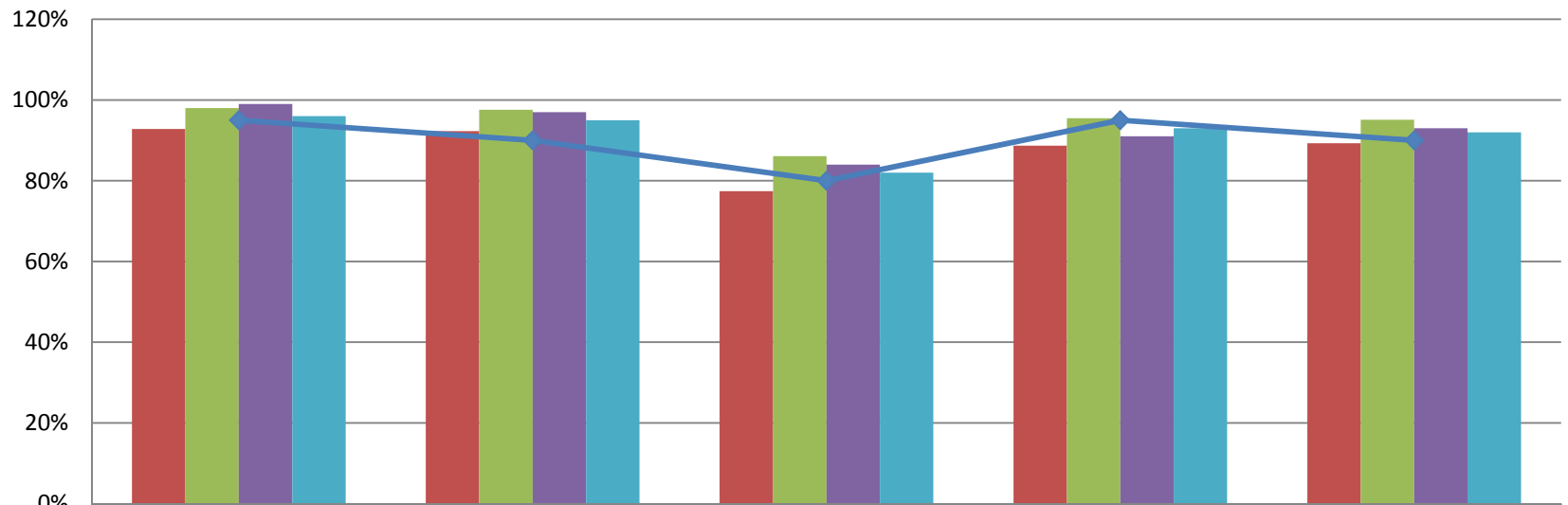




September 2016 Data Report

Brevard C.A.R.E.S. Data	August 2015	July 201	August	Sep-16
Total Number of Children Served by the Agency	1296	1489	1380	1020
Total Number of Families Served by the Agency	594	675	618	450

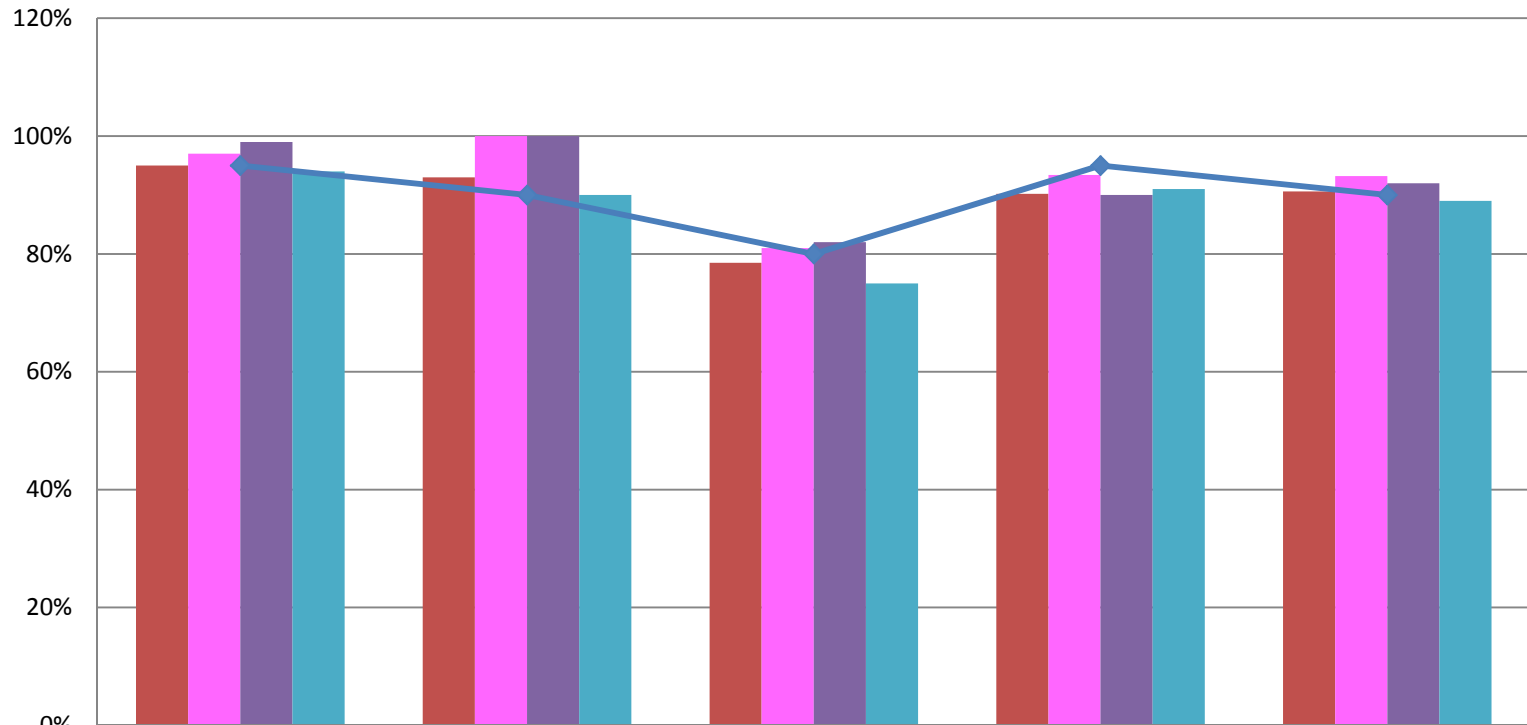
CARES Outcomes 2016-2017 - Qrt 1



	Safety Outcome	Wraparound Outcome	Natural Supports Outcome	Quality Assurance Outcome	Overall Outcome	
■	Sep-15	93%	92%	77%	89%	89%
■	July 2016	98%	98%	86%	96%	95%
■	August	99%	97%	84%	91%	93%
■	September	96%	95%	82%	93%	92%
◆	Target	95%	90%	80%	95%	90%

Prevention Data	August 2015	Jul-16	August	Sep-16
Number of new Prevention cases	92	22	28	20
Number of new Prevention children		36	78	43
Number of Children Served in Prevention	1016	1135	1057	692
Number of Families Served in Prevention	462	491	446	280
DCF/Case Management Referrals	20	20	26	15
Self/Community/211 Referrals	71	1	2	3
Case Closure Reasons	August 2015	Jul-16	August	Sep-16
Total number of FSFN closures	141	64	170	100
Case Supervision Completed/ Outcomes Achieved		3	12	7
Service Provision Completed		25	55	46
Family Requests Services Close		0	8	4
Service Refused by Family/ no legal grounds		8	32	5
Other		12	27	27
Family Whereabout Unknown/ Reasonable Efforts		16	36	11
Caseload Data	August 2015	Jul-16	August	Sep-16
Monthly Average Per Care Coordinator (# of Families)	39	55	55	42
Monthly Average Per Family Partner (# of Families)	33	72	58	36
Average length of Participation	170	177	161	164
Percent of Families with a Transition Plan	47%	75%	75%	N/A

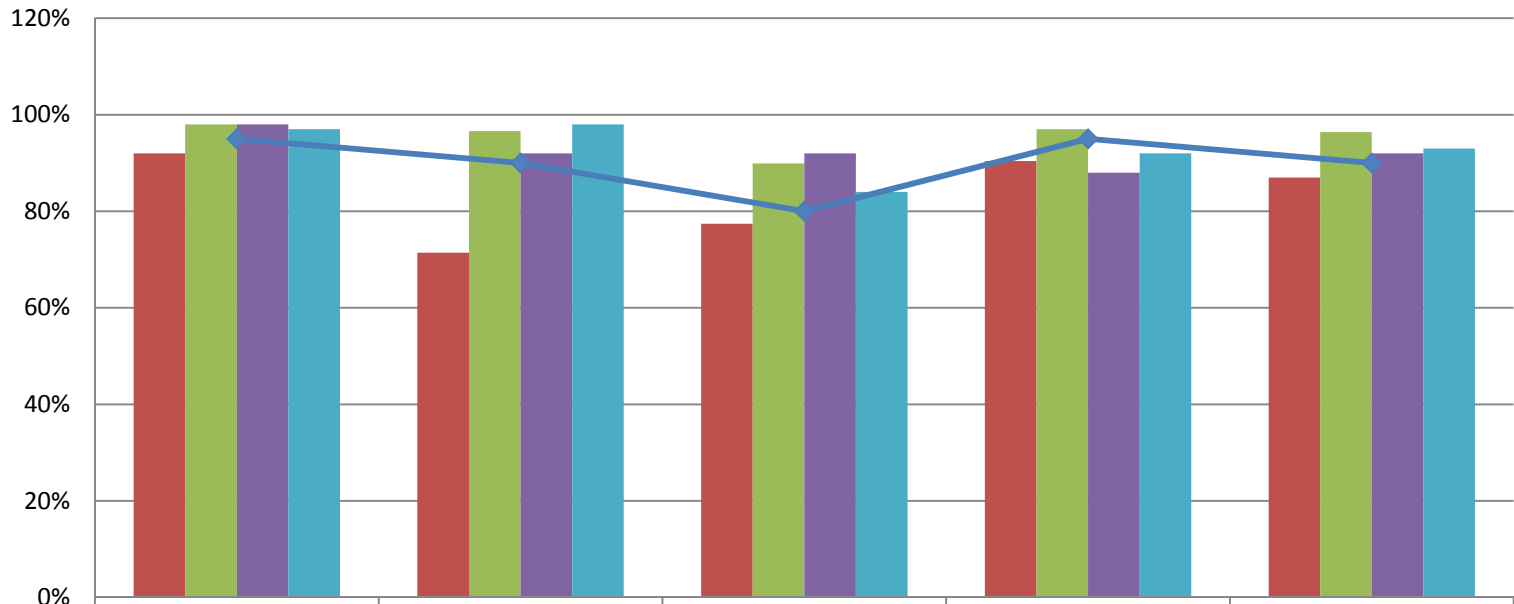
Prevention Outcomes 2016-17: Qrt 1



	Safety Outcome	Wraparound Outcome	Natural Supports Outcome	Quality Assurance Outcome	Overall Outcome
Oct-15	95%	93%	79%	90%	91%
July 2016	97%	100%	81%	93%	93%
August	99%	100%	82%	90%	92%
September	94%	90%	75%	91%	89%
Target	95%	90%	80%	95%	90%

Child Welfare Team Data	August 2015	Jul-16	August
Number of new NJIHS cases	8	15	13
Number of new NJIHS children		25	24
Number of Families Served in Non Judicial In Home Services	74	102	92
Number of Children Served in Non Judicial In Home Services	166	228	209
Case Closure Reasons	August 2015	Jul-16	August
Total number of FSFN closures	4	9	8
Case Supervision Completed/ Outcomes Achieved		6	5
Service Provision Completed		0	2
Family Requests Services Close		0	0
Other		3	1
Caseload Data	August 2015	Jul-16	August
Monthly Average of Families Per Care Coordinator	16	17	15
Monthly Average of Children Per Care Coordinator	38	38	35
Average length of Participation	158	111	116
Percentage of Home Visits Completed Timely for the Month		84%	97%
Percentage Approved Ongoing Family Functioning Assessment		49%	85%
Percent of Families with a Transition Plan	0%	50%	96%

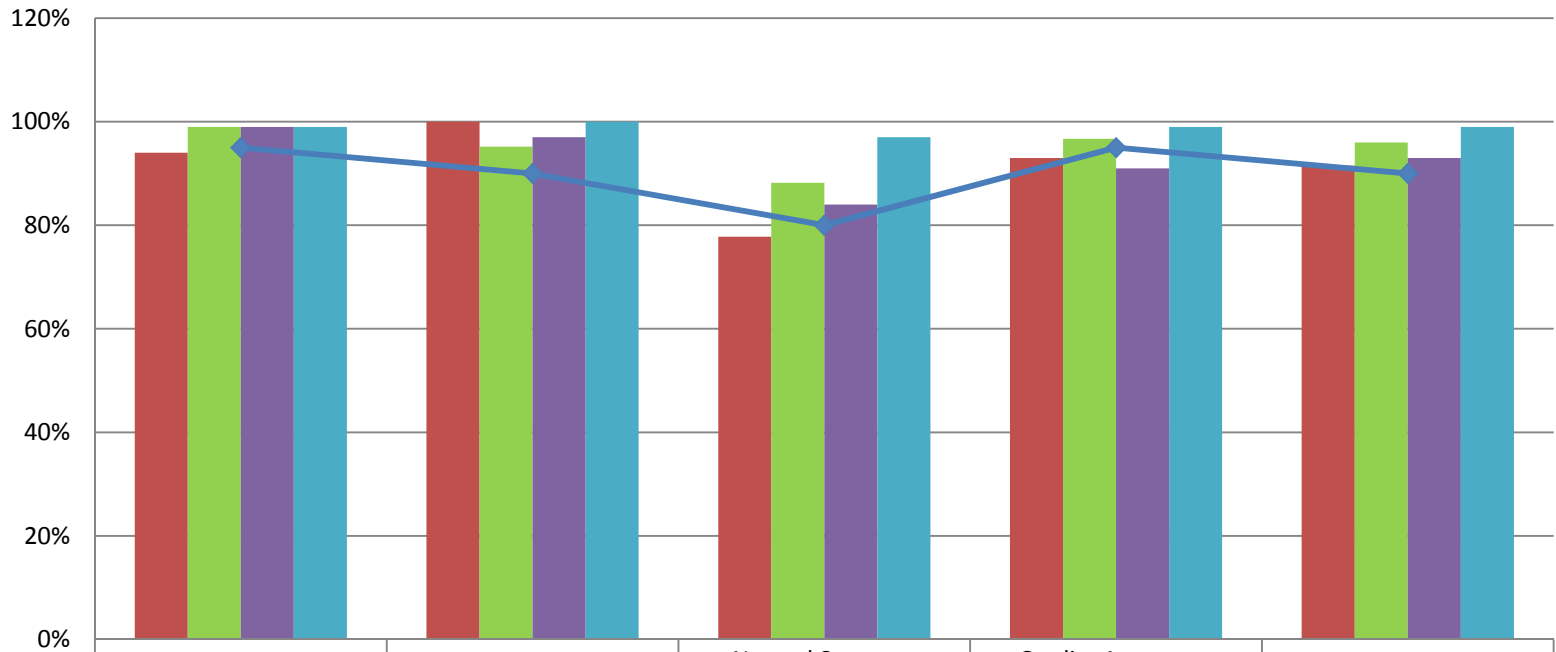
Child Welfare Outcomes 2016-17: Qrt 1



	Safety Outcome	Wraparound Outcome	Natural Supports Outcome	Quality Assurance Outcome	Overall Outcome
October 2015	92%	71%	77%	90%	87%
July 2016	98%	97%	90%	97%	96%
August	98%	92%	92%	88%	92%
September	97%	98%	84%	92%	93%
Target	95%	90%	80%	95%	90%

Community Services Data	August 2015	Jul-16	August	Sep-16
Number of Families Served in Post Adoption (in state)	38	62	64	66
Number of Children Served in Post Adoption (in state)	54	81	81	83
Number of Families Served by Head Start Coordinator		20	15	21
Number of Children Served by Head Start Coordinator		45	31	54
Number of Children Served by Safety Management Services Team	27	45	46	39
Number of Cases Served by Safety Management Services Team	8	20	21	18
Number of Children Served by Mobile Response Team	40	42	29	47
Number of Cribs for Kids Pack and Plays Distributed	28	29	24	38

Community Services Outcomes 2016-17: Qrt 1



	Safety Outcome	Wraparound Outcome	Natural Supports Outcome	Quality Assurance Outcome	Overall Outcome
■ October 2016	94%	100%	78%	93%	92%
■ July 2016	99%	95%	88%	97%	96%
■ August	99%	97%	84%	91%	93%
■ September	99%	100%	97%	99%	99%
◆ Target	95%	90%	80%	95%	90%