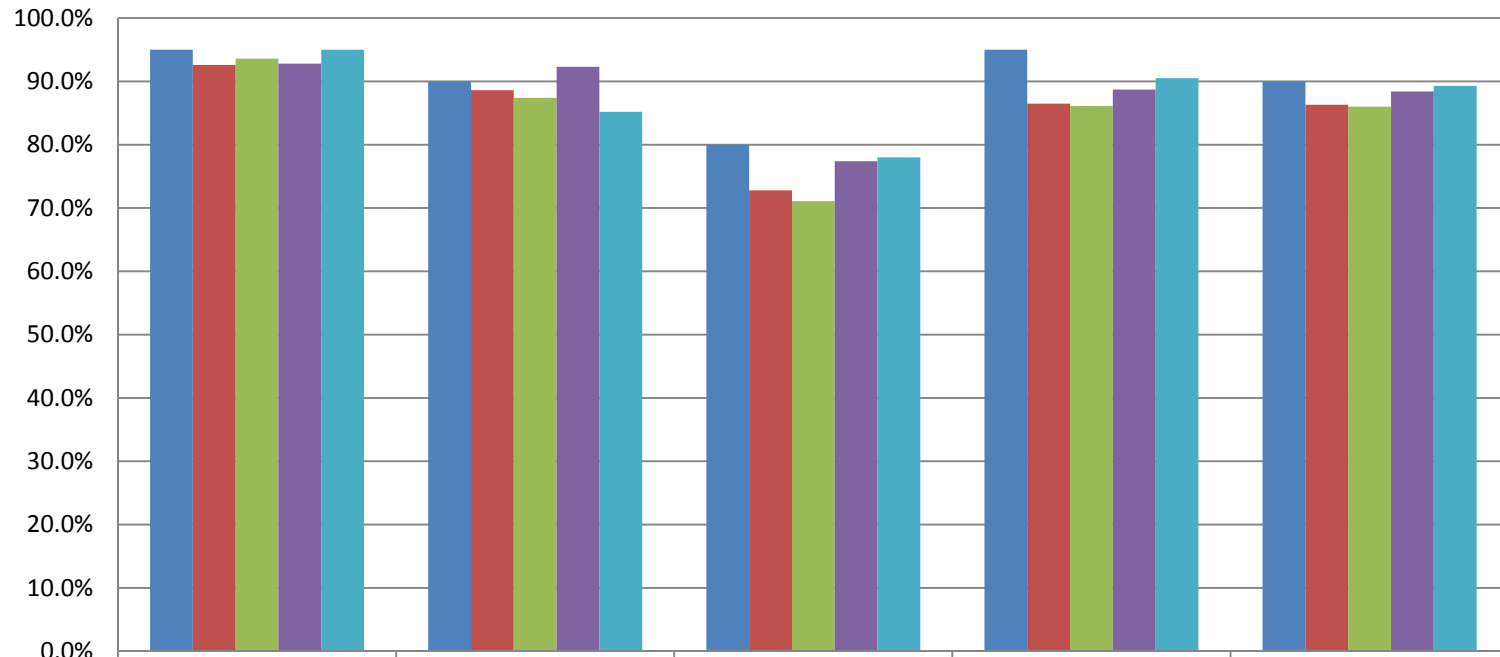




October 2015 Data Report

Brevard C.A.R.E.S. Data	Oct-14	July	August	Sept	Oct
Total Number of Children Served by the Agency	1416	1389	1296	1149	1158
Total Number of Families Served by the Agency	589	631	594	540	543

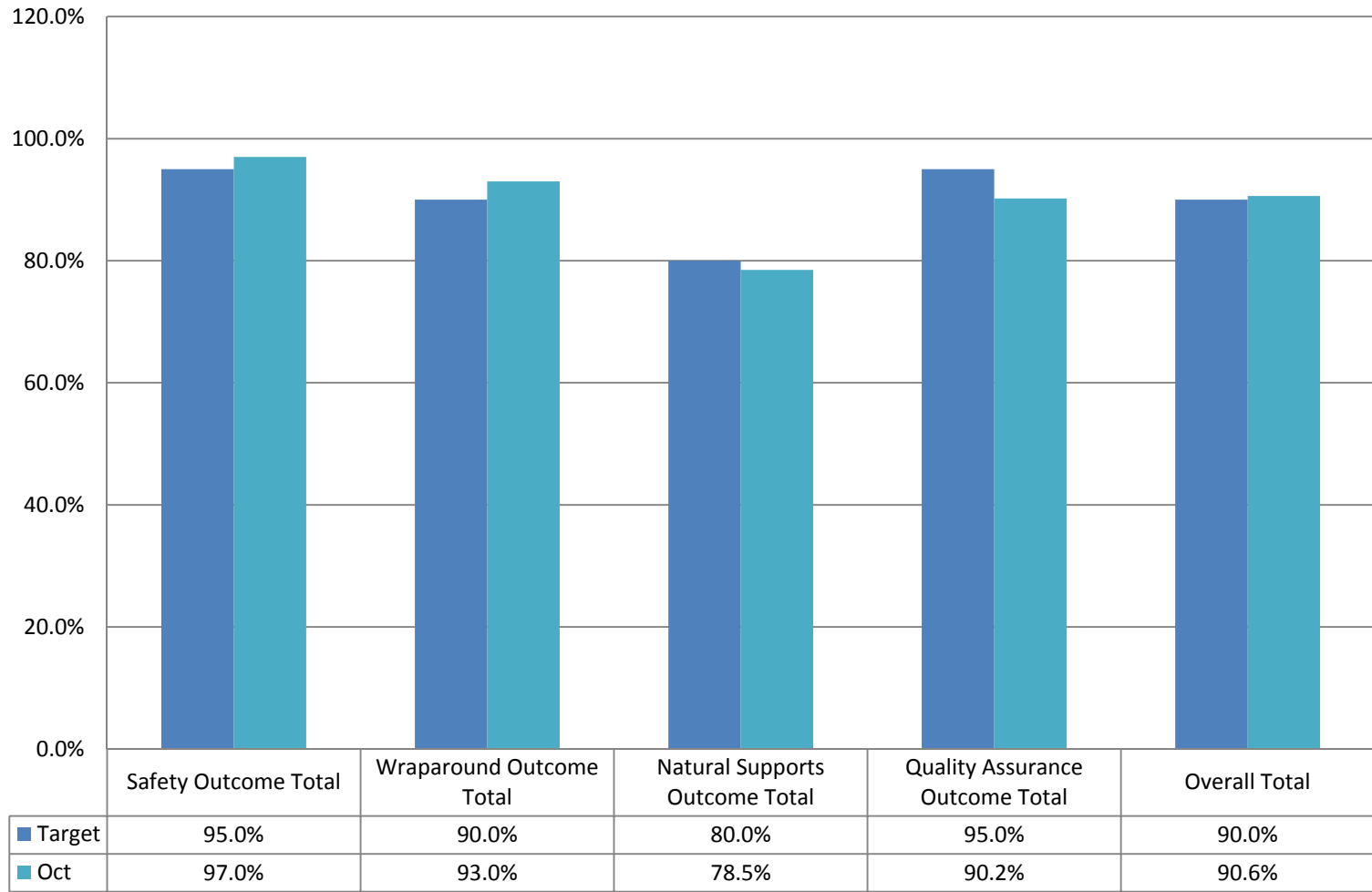
CARES OUTCOME DATA



	Safety Outcome Total	Wraparound Outcome Total	Natural Supports Outcome Total	Quality Assurance Outcome Total	Overall Total
■ Target	95.0%	90.0%	80.0%	95.0%	90.0%
■ July	92.6%	88.6%	72.8%	86.5%	86.3%
■ August	93.6%	87.4%	71.1%	86.1%	86.0%
■ Sept	92.8%	92.3%	77.4%	88.7%	88.4%
■ Oct	95.0%	85.2%	78.0%	90.5%	89.3%

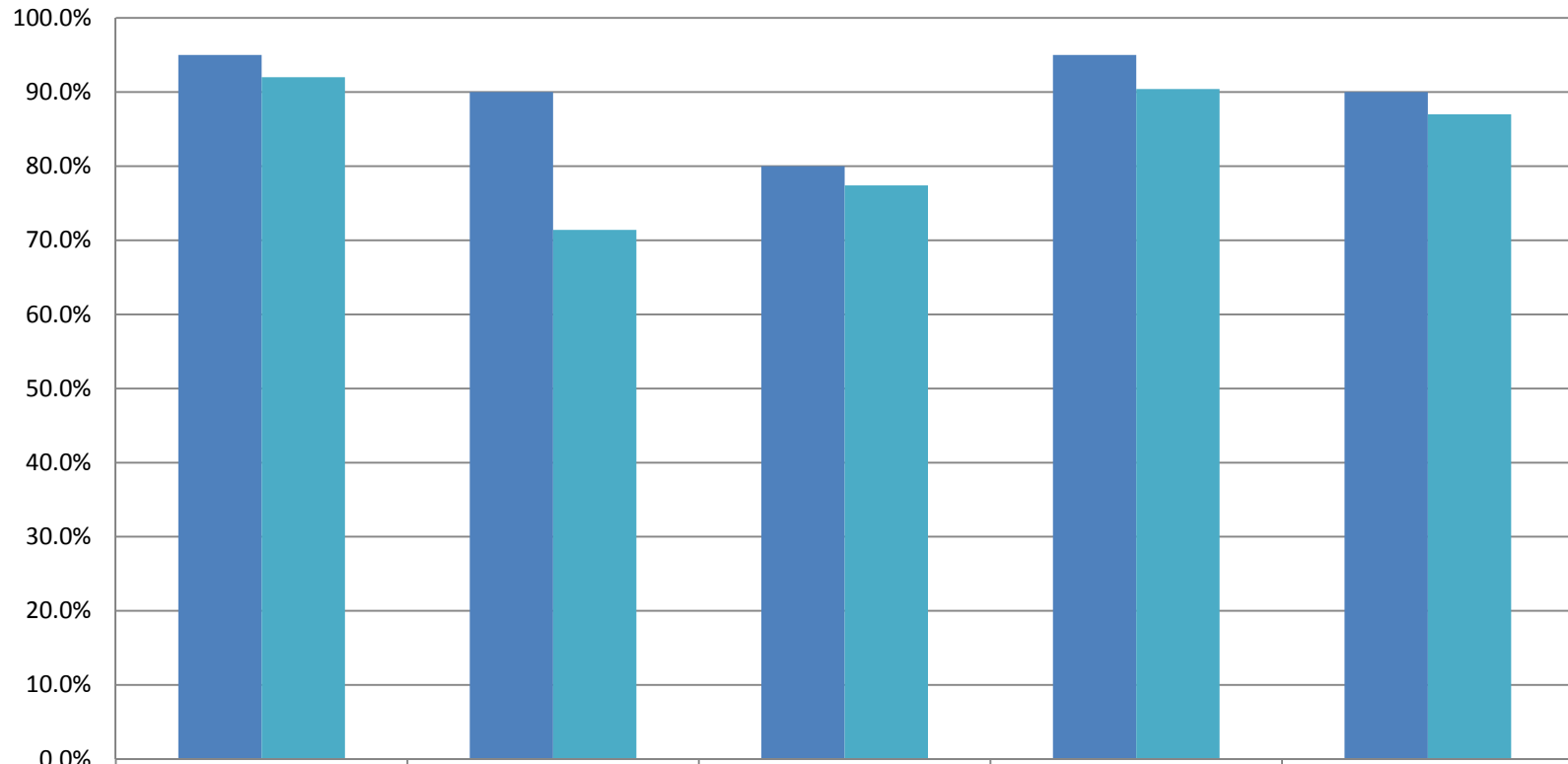
Prevention Data	Oct-14	July	August	Sept	Oct
Number of new Prevention cases	120	54	92	80	40
Number of new Prevention children					91
Number of Children Served in Prevention	1247	1104	1016	887	870
Number of Families Served in Prevention	567	493	462	412	395
DCF/Case Management Referrals	67	25	20	28	26
Self/Community/211 Referrals	40	29	71	49	49
Case Closure Reasons	Oct-14	July	August	Sept	Oct
Total number of FSFN closures	4	103	141	43	69
Case Supervision Completed/ Outcomes Achieved					0
Service Provision Completed					17
Family Requests Services Close					1
Service Refused by Family/ no legal grounds					1
Other					50
Caseload Data	Oct-14	July	August	Sept	Oct
Monthly Average Per Care Coordinator (# of Families)	61	58	39	37	29
Monthly Average Per Family Partner (# of Families)	47	32	33	28	29
Average length of Participation	N/A	590	170	471	159
Percent of Families with a Transition Plan	20%	29%	47%	100%	93

PREVENTION OUTCOME DATA 2015



Child Welfare Team Data	Oct-14	July	August	Sept	Oct
Number of new NJIHS cases	9	11	8	8	12
Number of new NJIHS children		30			21
Number of Families Served in Non Judicial In Home Services	53	77	74	85	75
Number of Children Served in Non Judicial In Home Services	116	176	166	206	168
Case Closure Reasons	Oct-14	July	August	Sept	Oct
Total number of FSFN closures	3	3	4	9	8
Case Supervision Completed/ Outcomes Achieved					5
Service Provision Completed					1
Family Requests Services Close					1
Other					1
Caseload Data	Oct-14	July	August	Sept	Oct
Monthly Average of Families Per Care Coordinator	14	16	16	14	15
Monthly Average of Children Per Care Coordinator	28	38	38	34	35
Average length of Participation	197	211	158	166	148
Percentage of Home Visits Completed Timely for the Month	100%	99.60%		100%	100%
Percentage Approved Ongoing Family Functioning Assessment					65%
Percent of Families with a Transition Plan	60%	100%	0%	50%	63%

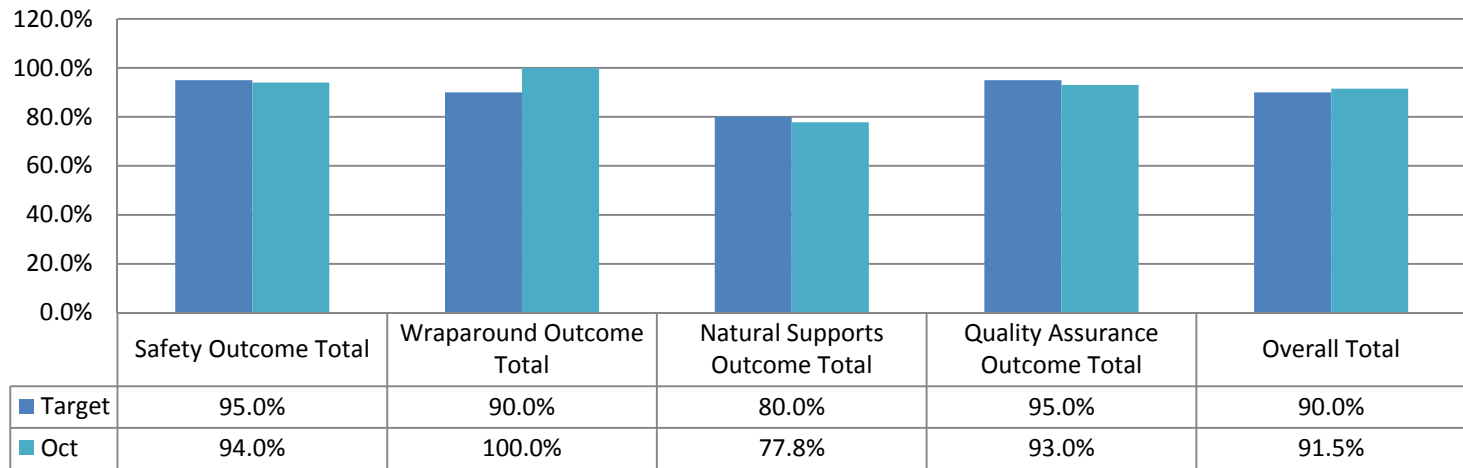
CHILD WELFARE OUTCOME DATA



	Safety Outcome Total	Wraparound Outcome Total	Natural Supports Outcome Total	Quality Assurance Outcome Total	Overall Total
■ Target	95.0%	90.0%	80.0%	95.0%	90.0%
■ Oct	92.0%	71.4%	77.4%	90.4%	87.0%

Community Services Data	Oct-14	July	August	Sept	Oct
Number of Families Served in Post Adoption (in state)	19	37	38	42	45
Number of Children Served in Post Adoption (in state)	31	44	54	59	61
Number of Families Served by Head Start Coordinator					6
Number of Children Served by Head Start Coordinator					15
Number of Children Served by Safety Management Services Team		36	27	21	18
Number of Cases Served by Safety Management Services Team		11	8	8	7
Number of Children Served by Mobile Response Team		51	40	49	61
Number of Cribs for Kids Pack and Plays Distributed	31	14	28	55	29

COMMUNITY SERVICES OUTCOME DATA

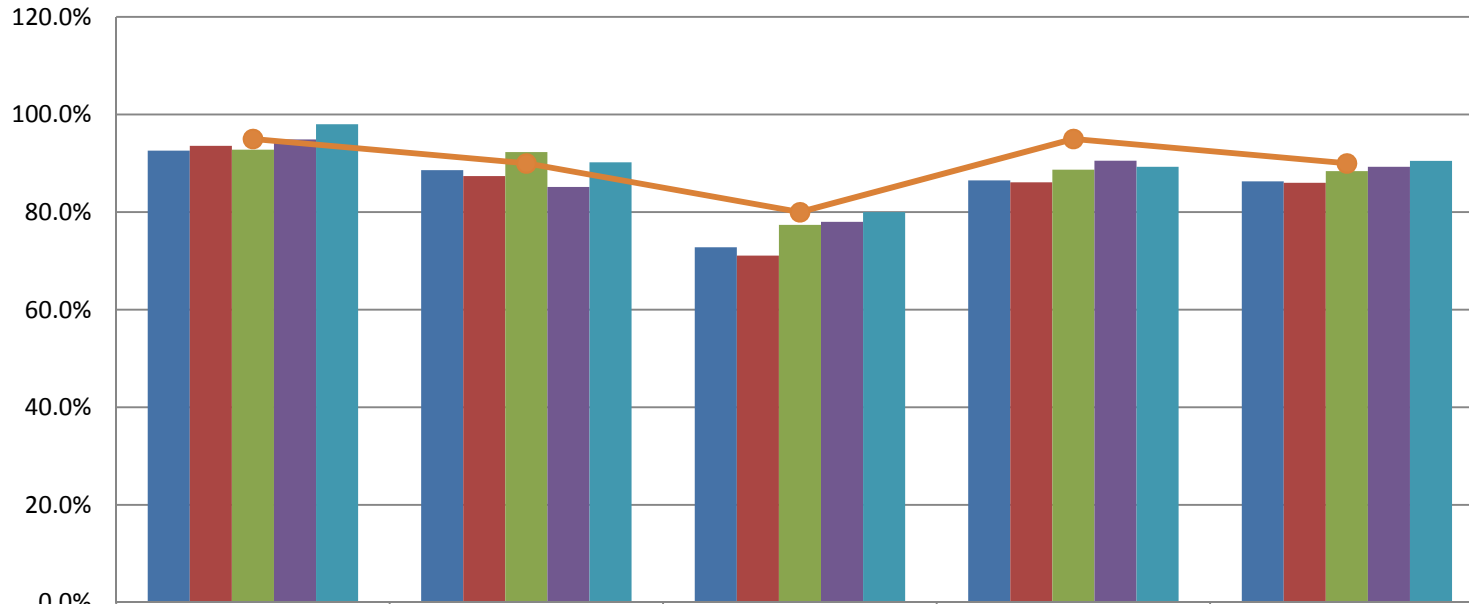




November 2015 Data Report

Brevard C.A.R.E.S. Data	July	August	Sept	Oct	Nov
Total Number of Children Served by the Agency	1389	1296	1149	1158	1123
Total Number of Families Served by the Agency	631	594	540	543	529

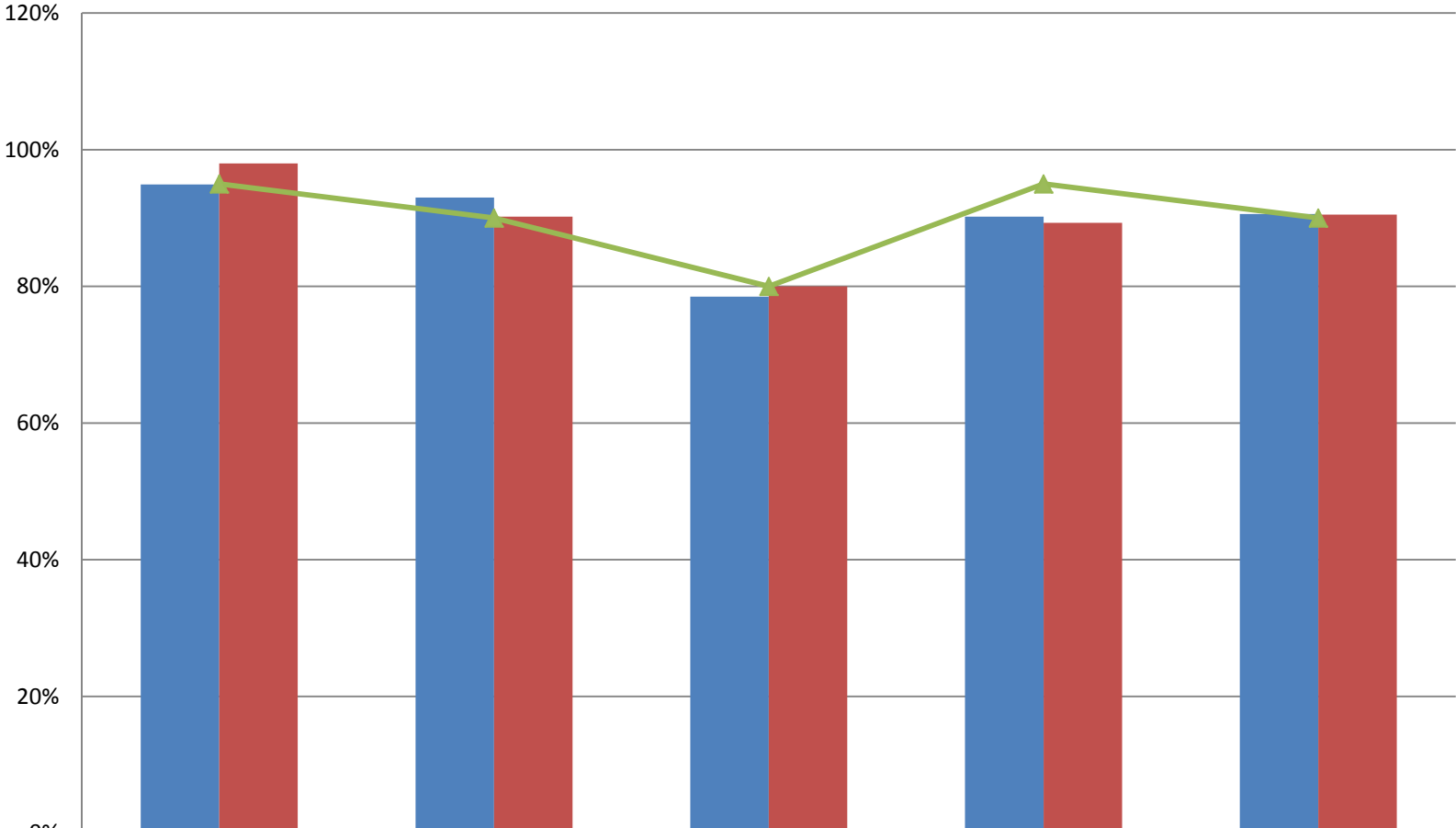
C.A.R.E.S. Outcomes



	Safety Outcome Total	Wraparound Outcome Total	Natural Supports Outcome Total	Quality Assurance Outcome Total	Overall Total
July	92.6%	88.6%	72.8%	86.5%	86.3%
Aug	93.6%	87.4%	71.1%	86.1%	86.0%
Sept	92.8%	92.3%	77.4%	88.7%	88.4%
Oct	95%	85.2%	78.0%	90.5%	89.3%
Nov	98%	90.2%	80.0%	89.3%	90.5%
Target	95%	90%	80%	95%	90%

Prevention Data	July	August	Sept	Oct	Nov
Number of new Prevention cases	54	92	80	40	66
Number of new Prevention children				91	134
Number of Children Served in Prevention	1104	1016	887	870	857
Number of Families Served in Prevention	493	462	412	395	395
DCF/Case Management Referrals	25	20	28	26	21
Self/Community/211 Referrals	29	71	49	49	52
Case Closure Reasons	July	August	Sept	Oct	Nov
Total number of FSFN closures	103	141	43	69	73
Case Supervision Completed/ Outcomes Achieved				0	2
Service Provision Completed				17	27
Family Requests Services Close				1	6
Service Refused by Family/ no legal grounds				1	8
Other				50	21
Caseload Data	July	August	Sept	Oct	Nov
Monthly Average Per Care Coordinator (# of Families)	58	39	37	29	28
Monthly Average Per Family Partner (# of Families)	32	33	28	29	28
Average length of Participation	590	170	471	159	109
Percent of Families with a Transition Plan	29%	47%	100%		100%

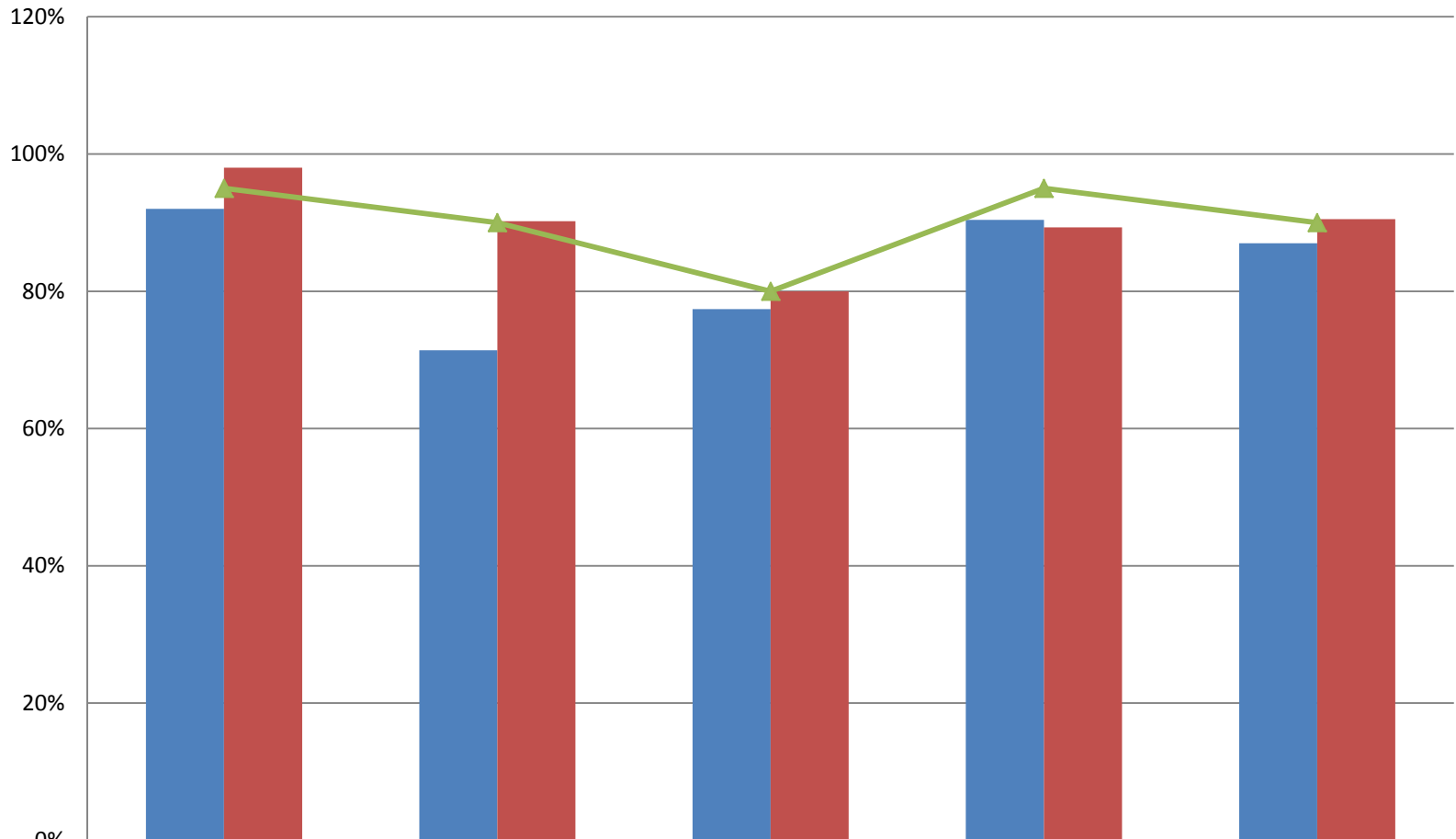
Prevention Outcomes



	Safety Outcome Total % YES	Wraparound Outcome Total %YES	Natural Supports Outcome Total % YES	Quality Assurance Outcome Total % YES	Overall Total % YES
Oct	95%	93.0%	78.5%	90.2%	90.6%
Nov	98%	90.2%	80.0%	89.3%	90.5%
Target	95%	90%	80%	95%	90%

Child Welfare Team Data	July	August	Sept	Oct	Nov
Number of new NJIHS cases	11	8	8	12	8
Number of new NJIHS children	30			21	14
Number of Families Served in Non Judicial In Home Services	77	74	85	75	75
Number of Children Served in Non Judicial In Home Services	176	166	206	168	173
Case Closure Reasons	July	August	Sept	Oct	Nov
Total number of FSFN closures	3	4	9	8	8
Case Supervision Completed/ Outcomes Achieved				5	5
Service Provision Completed				1	1
Family Requests Services Close				1	1
Other				1	1
Caseload Data	July	August	Sept	Oct	Nov
Monthly Average of Families Per Care Coordinator	16	16	14	15	13
Monthly Average of Children Per Care Coordinator	38	38	34	35	29
Average length of Participation	211	158	166	148	155
Percentage of Home Visits Completed Timely for the Month	99.60%		100%		
Percentage Approved Ongoing Family Functioning Assessment					53%
Percent of Families with a Transition Plan	100%	0%	50%		50%

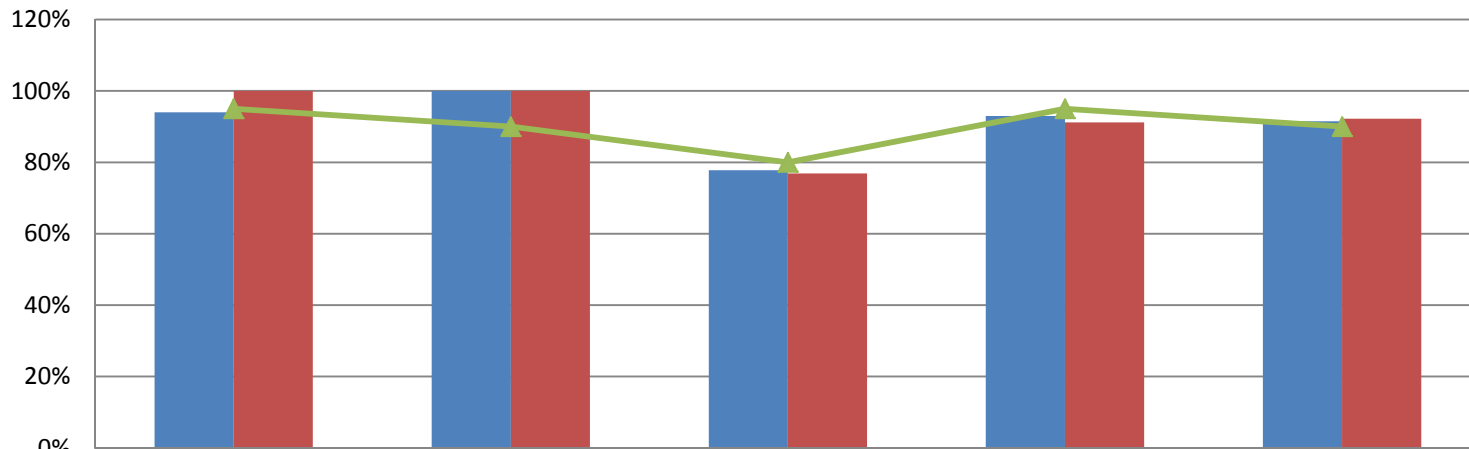
Child Welfare Outcomes



	Safety Outcome Total % YES	Wraparound Outcome Total % YES	Natural Supports Outcome Total % YES	Quality Assurance Outcome Total % YES	Overall Total % YES
■ Oct	92%	71.4%	77.4%	90.4%	87.0%
■ Nov	98%	90.2%	80.0%	89.3%	90.5%
▲ Target	95%	90%	80%	95%	90%

Community Services Data	July	August	Sept	Oct	Nov
Number of Families Served in Post Adoption (in state)	37	38	42	45	50
Number of Children Served in Post Adoption (in state)	44	54	59	61	67
Number of Families Served by Head Start Coordinator				6	10
Number of Children Served by Head Start Coordinator				15	27
Number of Children Served by Safety Management Services Team	36	27	21	18	21
Number of Cases Served by Safety Management Services Team	11	8	8	7	9
Number of Children Served by Mobile Response Team	51	40	49	61	59
Number of Cribs for Kids Pack and Plays Distributed	14	28	55	29	42

Community Services Outcomes



	Safety Outcome Total % YES	Wraparound Outcome Total % YES	Natural Supports Outcome Total % YES	Quality Assurance Outcome Total % YES	Overall Total % YES
Oct	94%	100.0%	77.8%	93.0%	91.5%
Nov	100%	100.0%	76.9%	91.2%	92.2%
Target	95.0%	90.0%	80.0%	95.0%	90.0%