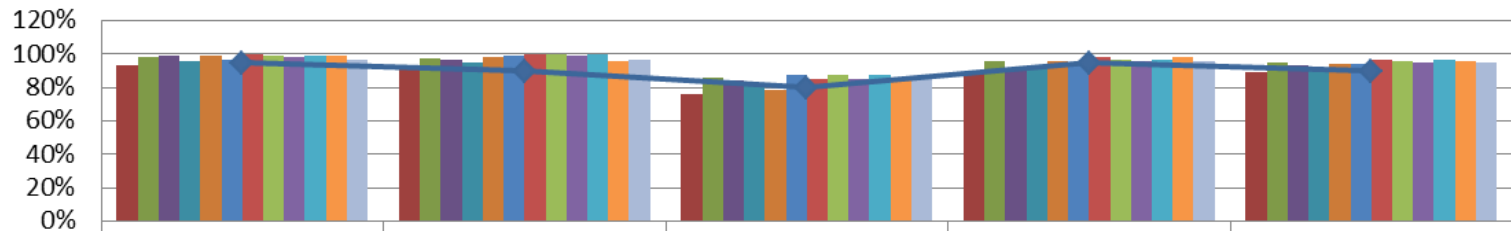




May 2017 Data Report

Brevard C.A.R.E.S. Data	May 2016	July 2016	August 2016	September 2016	October 2016	November 2016	December 2016	January 2017	February 2017	March 2017	April 2017	May 2017
Total Number of Children Served by the Agency	1804	1489	1380	1020	857	806	771	768	797	760	849	889
Total Number of Families Served by the Agency	846	675	618	450	376	353	341	346	358	347	371	390

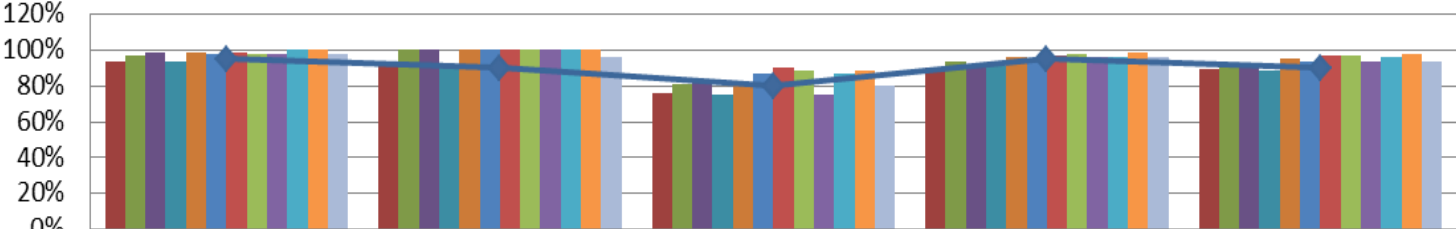
CARES Outcomes 2016-2017



	Safety Outcome	Wraparound Outcome	Natural Supports Outcome	Quality Assurance Outcome	Overall Outcome
May 2016	93%	93%	77%	90%	89%
July 2016	98%	98%	86%	96%	95%
August 2016	99%	97%	84%	91%	93%
September 2016	96%	95%	82%	93%	92%
October 2016	99%	98%	79%	96%	94%
November 2016	97%	99%	88%	94%	94%
December 2016	100%	100%	85%	98%	97%
January 2017	99%	100%	88%	97%	96%
February	98%	99%	85%	96%	95%
March 2017	99%	100%	88%	97%	97%
April 2017	99%	96%	86%	98%	96%
May 2017	97%	97%	85%	96%	95%
Target	95%	90%	80%	95%	90%

Prevention Data	May 2016	July 2016	August 2016	September 2016	October 2016	November 2016	December 2016	January 2017	February 2017	March 2017	April 2017	May 2017
Number of new Prevention cases	52	22	28	20	21	19	13	12	27	41	36	32
Number of new Prevention children	130	36	78	43	51	43	30	30	62	108	112	81
Number of Children Served in Prevention	1445	1135	1057	692	503	451	432	425	447	403	482	423
Number of Families Served in Prevention	656	491	446	280	194	173	166	166	175	156	180	199
DCF/Case Management Referrals	0	20	26	15	14	15	17	8	27	37	35	33
Self/Community/211 Referrals	0	1	2	3	7	5	3	5	3	3	3	1
Case Closure Reasons	May 2016	July 2016	August 2016	September 2016	October 2016	November 2016	December 2016	January 2017	February 2017	March 2017	April 2017	May 2017
Total number of FSFN closures	48	64	170	100	38	22	15	16	52	11	16	26
Case Supervision Completed/ Outcomes Achieved	2	3	12	7	6	5	1	4	11	1	5	6
Service Provision Completed	16	25	55	46	16	8	5	9	26	5	4	10
Family Requests Services Close	2	0	8	4	1	0	2	0	0	0	0	0
Service Refused by Family/ no legal grounds	4	8	32	5	4	2	3	1	2	0	1	1
Other	14	12	27	27	1	3	1	2	4	5	3	1
Family Whereabout Unknown/ Reasonable Efforts	10	16	36	11	10	4	3	0	9	0	3	8
Caseload Data	May 2016	July 2016	August 2016	September 2016	October 2016	November 2016	December 2016	January 2017	February 2017	March 2017	April 2017	May 2017
Monthly Average Per Care Coordinator (# of Families)	72	55	55	42	33	32	32	28	34	26	30	35
Monthly Average Per Family Partner (# of Families)	72	72	58	36	14	4	8	4	4	9	14	12
Average length of Participation	151	177	161	164	147	159	177	157	162	117	114	113
Percent of Families with a Transition Plan		75%	75%	N/A	100%	100%	100%	75%	100%	100%	100%	71%

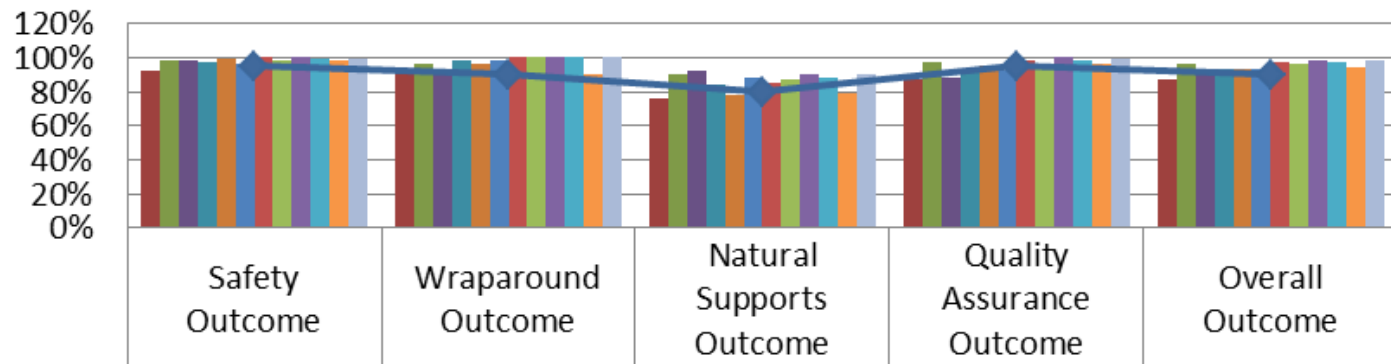
Prevention Outcomes 2016-2017



	Safety Outcome	Wraparound Outcome	Natural Supports Outcome	Quality Assurance Outcome	Overall Outcome
May 2016	94%	91%	76%	90%	90%
July 2016	97%	100%	81%	93%	93%
August 2016	99%	100%	82%	90%	92%
September 2016	94%	90%	75%	91%	89%
October 2016	99%	100%	80%	96%	95%
November 2016	98%	100%	87%	94%	94%
December 2016	99%	100%	90%	97%	97%
January 2017	98%	100%	89%	98%	97%
February 2017	98%	100%	75%	96%	94%
March 2017	100%	100%	87%	96%	96%
April 2017	100%	100%	89%	99%	98%
May 2017	98%	96%	80%	96%	94%
◆ Target	95%	90%	80%	95%	90%

Child Welfare Team Data	May 2016	July 2016	August 2016	September 2016	October 2016	November 2016	December 2016	January 2017	February 2017	March 2017	April 2017	May 2017
Number of new NJHS cases	16	15	13	3	11	11	9	15	11	22	6	14
Number of new NJHS children	28	25	24	7	26	28	21	26	18	41	19	33
Number of Families Served in Non Judicial In Home Services	100	102	92	82	78	80	71	76	76	92	87	88
Number of Children Served in Non Judicial In Home Services	213	228	209	187	177	182	155	161	154	185	189	194
Case Closure Reasons	May 2016	July 2016	August 2016	September 2016	October 2016	November 2016	December 2016	January 2017	February 2017	March 2017	April 2017	May 2017
Total number of FSN closures	12	9	8	6	1	10	3	6	1	4	8	3
Case Supervision Completed/ Outcomes Achieved	7	6	5	3	0	5	0	6	1	3	2	3
Service Provision Completed	3	0	2	1	1	3	1	0	0		1	0
Family Requests Services Close	2	0	0	2	0	1	2	0	0	1	4	0
Other	0	3	1	0	0	1	0	0	0		1	0
Caseload Data	May 2016	July 2016	August 2016	September 2016	October 2016	November 2016	December 2016	January 2017	February 2017	March 2017	April 2017	May 2017
Monthly Average of Families Per Care Coordinator	17	17	15	14	13	13	12	13	13	15	15	15
Monthly Average of Children Per Care Coordinator	36	38	35	32	30	30	26	27	26	31	32	32
Average length of Participation	100	111	116	132	138	130	123	115	114	109	130	116
Percentage of Home Visits Completed Timely for the Month*	95%	84%	97%	100%	87%	89%	100%	100%	100%*	88%	86%	96%
Percentage Approved Ongoing Family Functioning Assessment	46%	49%	85%	77%	86%	68%	no data	82%	93%	65%	68%	52%
Percent of Families with a Transition Plan	80%	50%	96%	93%	100%	60%	33%	100%	100%	100%	100%	Unkn

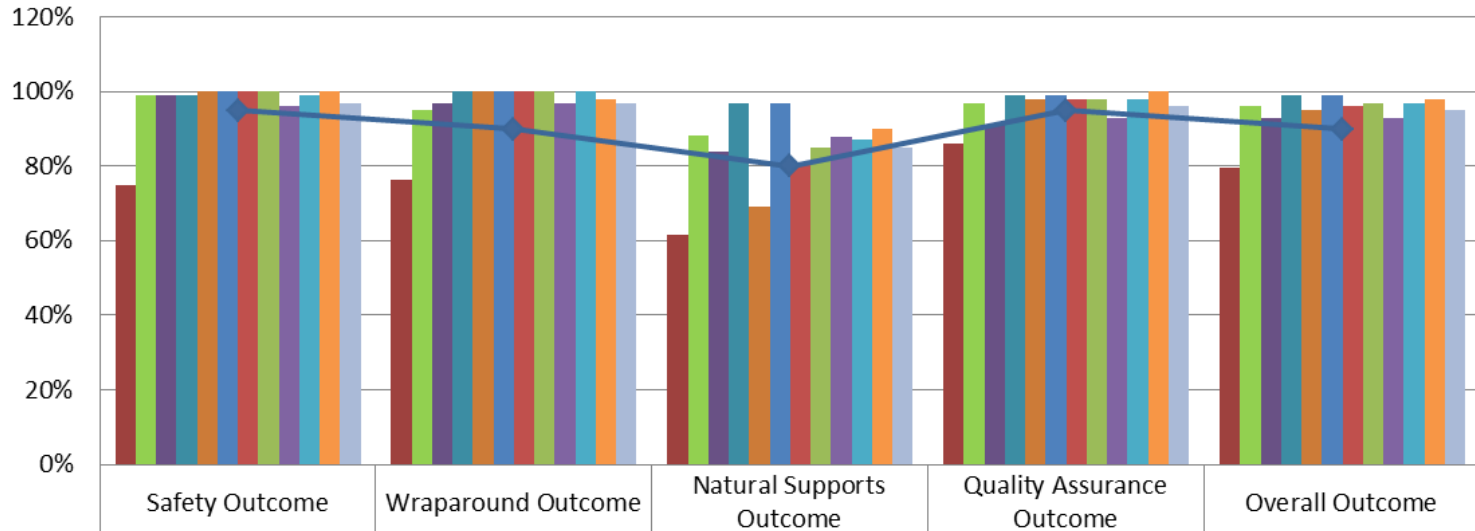
Child Welfare Outcomes 2016-17



	Safety Outcome	Wraparound Outcome	Natural Supports Outcome	Quality Assurance Outcome	Overall Outcome
May 2016	92%	92%	76%	87%	87%
July 2016	98%	97%	90%	97%	96%
August 2016	98%	92%	92%	88%	92%
September 2016	97%	98%	84%	92%	93%
October 2016	99%	96%	78%	95%	93%
November 2016	96%	98%	88%	92%	93%
December 2016	100%	100%	85%	98%	97%
January 2017	98%	100%	87%	96%	96%
February 2017	100%	100%	90%	100%	98%
March 2017	99%	100%	88%	98%	97%
April 2017	98%	90%	79%	96%	94%
May 2017	99%	100%	90%	99%	98%
◆ Target	95%	90%	80%	95%	90%

Community Services Data	May 2016	July 2016	August 2016	September 2016	October 2016	November 2016	December 2016	January 2017	February 2017	March 2017	April 2017	May 2017
Number of Families Served in Post Adoption (in state)	61	62	64	66	70	66	66	66	65	66	67	67
Number of Children Served in Post Adoption (in state)	80	81	81	83	88	82	81	83	82	83	83	82
Number of Families Served by Head Start Coordinator	28	20	15	21	30	31	34	36	38	31	33	32
Number of Children Served by Head Start Coordinator	65	45	31	54	80	86	93	97	101	83	88	83
Number of Children Served by Safety Management Services Team	34	45	46	39	44	44	65	69	74	69	53	64
Number of Cases Served by Safety Management Services Team	14	20	21	18	21	23	26	25	27	25	21	23
Number of Children Served by Mobile Response Team	52	42	29	47	43	35	40	55	56	44	32	42
Number of Cribs for Kids Pack and Plays Distributed	4	29	24	38	27	39	14	22	18	33	26	22

Community Services Outcomes 2016-17



	Safety Outcome	Wraparound Outcome	Natural Supports Outcome	Quality Assurance Outcome	Overall Outcome
May 2016	75%	76%	62%	86%	80%
July 2016	99%	95%	88%	97%	96%
August 2016	99%	97%	84%	91%	93%
September 2016	99%	100%	97%	99%	99%
October 2016	100%	100%	69%	98%	95%
November 2016	100%	100%	97%	99%	99%
December 2016	100%	100%	81%	98%	96%
January 2017	100%	100%	85%	98%	97%
February 2017	96%	97%	88%	93%	93%
March 2017	99%	100%	87%	98%	97%
April 2017	100%	98%	90%	100%	98%
May 2017	97%	97%	85%	96%	95%
Target	95%	90%	80%	95%	90%