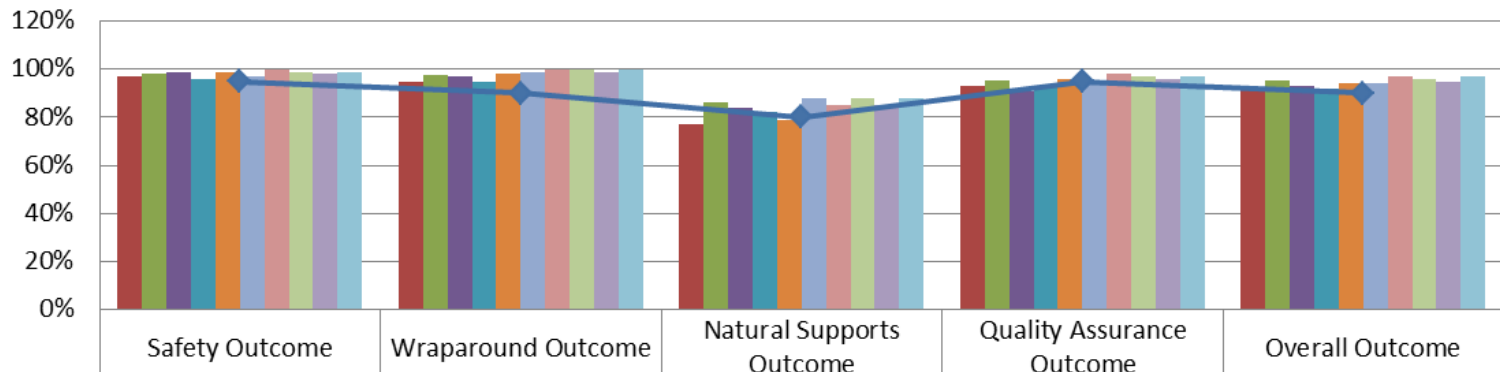




March 2017 Data Report

Brevard C.A.R.E.S. Data	March 2016	July 2016	August 2016	September 2016	October 2016	November 2016	December 2016	January 2017	February 2017	March 2017
Total Number of Children Served by the Agency	1776	1489	1380	1020	857	806	771	768	797	760
Total Number of Families Served by the Agency	833	675	618	450	376	353	341	346	358	347

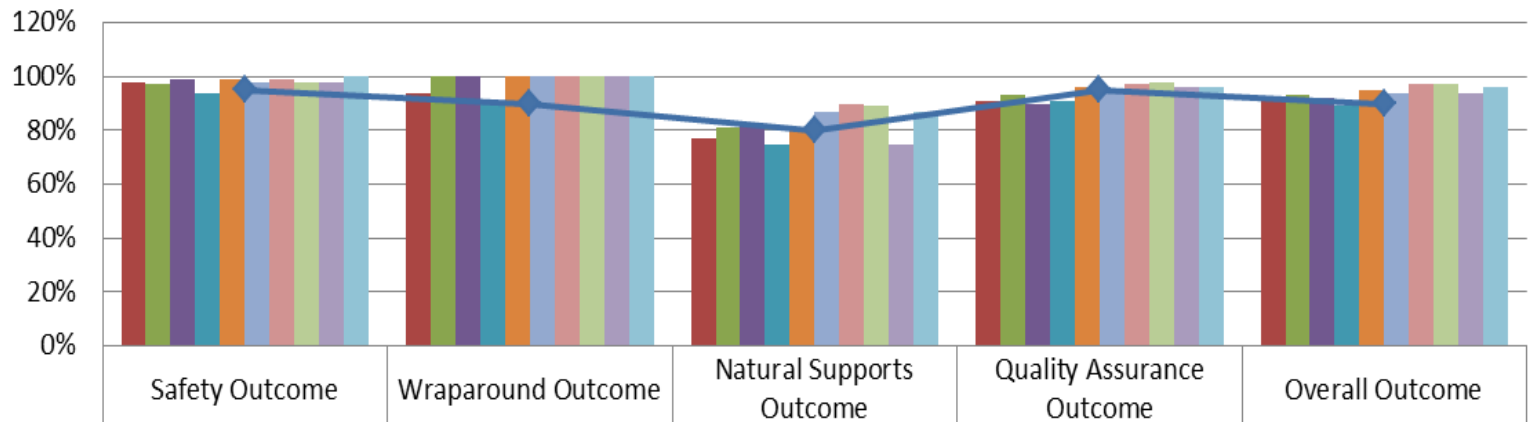
### CARES Outcomes 2016-2017



	Safety Outcome	Wraparound Outcome	Natural Supports Outcome	Quality Assurance Outcome	Overall Outcome
March 2017	97%	95%	77%	93%	92%
July 2016	98%	98%	86%	96%	95%
August 2016	99%	97%	84%	91%	93%
September 2016	96%	95%	82%	93%	92%
October 2016	99%	98%	79%	96%	94%
November 2016	97%	99%	88%	94%	94%
December 2016	100%	100%	85%	98%	97%
January 2017	99%	100%	88%	97%	96%
February	98%	99%	85%	96%	95%
March 2017	99%	100%	88%	97%	97%
◆ Target	95%	90%	80%	95%	90%

<b>Prevention Data</b>	March 2016	July 2016	August 2016	September 2016	October 2016	November 2016	December 2016	January 2017	February 2017	March 2017
Number of new Prevention cases	101	22	28	20	21	19	13	12	27	41
Number of new Prevention children	225	36	78	43	51	43	30	30	62	108
Number of Children Served in Prevention	1452	1135	1057	692	503	451	432	425	447	403
Number of Families Served in Prevention	661	491	446	280	194	173	166	166	175	156
DCF/Case Management Referrals		20	26	15	14	15	17	8	27	37
Self/Community/211 Referrals		1	2	3	7	5	3	5	3	3
<b>Case Closure Reasons</b>	March 2016	July 2016	August 2016	September 2016	October 2016	November 2016	December 2016	January 2017	February 2017	March 2017
Total number of FSFN closures	80	64	170	100	38	22	15	16	52	11
Case Supervision Completed/ Outcomes Achieved	6	3	12	7	6	5	1	4	11	1
Service Provision Completed	25	25	55	46	16	8	5	9	26	5
Family Requests Services Close	3	0	8	4	1	0	2	0	0	0
Service Refused by Family/ no legal grounds	13	8	32	5	4	2	3	1	2	0
Other	3	12	27	27	1	3	1	2	4	5
Family Whereabout Unknown/ Reasonable Efforts	30	16	36	11	10	4	3	0	9	0
<b>Caseload Data</b>	March 2016	July 2016	August 2016	September 2016	October 2016	November 2016	December 2016	January 2017	February 2017	March 2017
Monthly Average Per Care Coordinator (# of Families)	65	55	55	42	33	32	32	28	34	26
Monthly Average Per Family Partner (# of Families)	65	72	58	36	14	4	8	4	4	9
Average length of Participation	121	177	161	164	147	159	177	157	162	117
Percent of Families with a Transition Plan		75%	75%	N/A	100%	100%	100%	75%	100%	100%

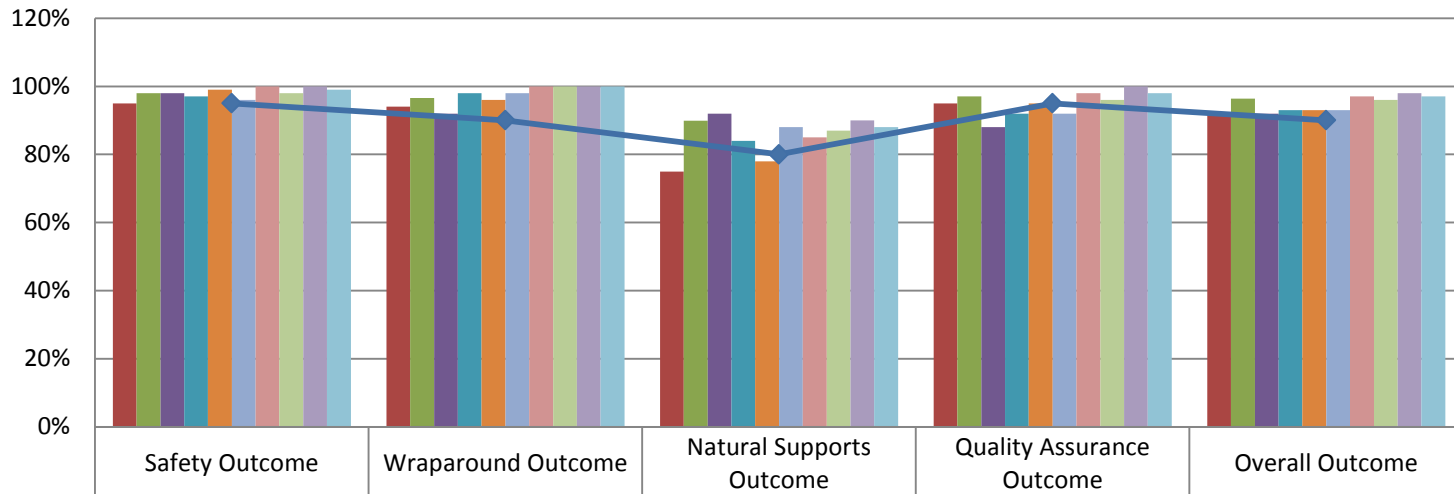
## Prevention Outcomes 2016-2017



	Safety Outcome	Wraparound Outcome	Natural Supports Outcome	Quality Assurance Outcome	Overall Outcome
■ March 2017	98%	94%	77%	91%	91%
■ July 2016	97%	100%	81%	93%	93%
■ August 2016	99%	100%	82%	90%	92%
■ September 2016	94%	90%	75%	91%	89%
■ October 2016	99%	100%	80%	96%	95%
■ November 2016	98%	100%	87%	94%	94%
■ December 2016	99%	100%	90%	97%	97%
■ January 2017	98%	100%	89%	98%	97%
■ February 2017	98%	100%	75%	96%	94%
■ March 2017	100%	100%	87%	96%	96%
◆ Target	95%	90%	80%	95%	90%

<b>Child Welfare Team Data</b>	March 2016	July 2016	August 2016	September 2016	October 2016	November 2016	December 2016	January 2017	February 2017	March 2017
Number of new NJIHS cases	16	15	13	3	11	11	9	15	11	22
Number of new NJIHS children	35	25	24	7	26	28	21	26	18	41
Number of Families Served in Non Judicial In Home Services	84	102	92	82	78	80	71	76	76	92
Number of Children Served in Non Judicial In Home Services	184	228	209	187	177	182	155	161	154	185
<b>Case Closure Reasons</b>	March 2016	July 2016	August 2016	September 2016	October 2016	November 2016	December 2016	January 2017	February 2017	March 2017
Total number of FSFN closures	5	9	8	6	1	10	3	6	1	4
Case Supervision Completed/ Outcomes Achieved	4	6	5	3	0	5	0	6	1	3
Service Provision Completed	0	0	2	1	1	3	1	0	0	
Family Requests Services Close	0	0	0	2	0	1	2	0	0	1
Other	1	3	1	0	0	1	0	0	0	
<b>Caseload Data</b>	March 2016	July 2016	August 2016	September 2016	October 2016	November 2016	December 2016	January 2017	February 2017	March 2017
Monthly Average of Families Per Care Coordinator	14	17	15	14	13	13	12	13	13	15
Monthly Average of Children Per Care Coordinator	31	38	35	32	30	30	26	27	26	31
Average length of Participation	131	111	116	132	138	130	123	115	114	109
Percentage of Home Visits Completed Timely for the Month*	100%	84%	97%	99.80%	87.00%	89.00%	100.00%	100%	100%*	88%
Percentage Approved Ongoing Family Functioning Assessment	47%	49%	85%	76.67%	86.00%	67.74%	no data	82%	93%	65%
Percent of Families with a Transition Plan	89%	50%	96%	92.90%	100.00%	60.00%	33.30%	100%	100%	100%

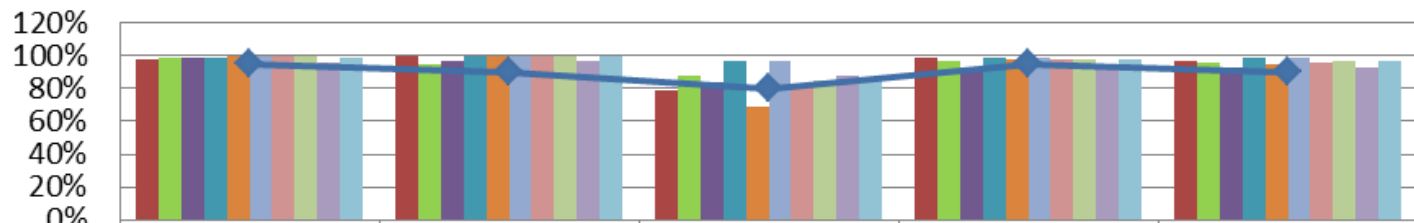
## Child Welfare Outcomes 2016-17



	Safety Outcome	Wraparound Outcome	Natural Supports Outcome	Quality Assurance Outcome	Overall Outcome
March 2017	95%	94%	75%	95%	92%
July 2016	98%	97%	90%	97%	96%
August 2016	98%	92%	92%	88%	92%
September 2016	97%	98%	84%	92%	93%
October 2016	99%	96%	78%	95%	93%
November 2016	96%	98%	88%	92%	93%
December 2016	100%	100%	85%	98%	97%
January 2017	98%	100%	87%	96%	96%
February 2017	100%	100%	90%	100%	98%
March 2017	99%	100%	88%	98%	97%
Target	95%	90%	80%	95%	90%

<b>Community Services Data</b>	March 2016	July 2016	August 2016	September 2016	October 2016	November 2016	December 2016	January 2017	February 2017	March 2017
Number of Families Served in Post Adoption (in state)	59	62	64	66	70	66	66	66	65	66
Number of Children Served in Post Adoption (in state)	77	81	81	83	88	82	81	83	82	83
Number of Families Served by Head Start Coordinator	26	20	15	21	30	31	34	36	38	31
Number of Children Served by Head Start Coordinator	55	45	31	54	80	86	93	97	101	83
Number of Children Served by Safety Management Services Team	26	45	46	39	44	44	65	69	74	69
Number of Cases Served by Safety Management Services Team	11	20	21	18	21	23	26	25	27	25
Number of Children Served by Mobile Response Team	91	42	29	47	43	35	40	55	56	44
Number of Cribs for Kids Pack and Plays Distributed	29	29	24	38	27	39	14	22	18	33

## Community Services Outcomes 2016-17



	Safety Outcome	Wraparound Outcome	Natural Supports Outcome	Quality Assurance Outcome	Overall Outcome
March 2017	98%	100%	79%	99%	97%
July 2016	99%	95%	88%	97%	96%
August 2016	99%	97%	84%	91%	93%
September 2016	99%	100%	97%	99%	99%
October 2016	100%	100%	69%	98%	95%
November 2016	100%	100%	97%	99%	99%
December 2016	100%	100%	81%	98%	96%
January 2017	100%	100%	85%	98%	97%
February 2017	96%	97%	88%	93%	93%
March 2017	99%	100%	87%	98%	97%
Target	95%	90%	80%	95%	90%