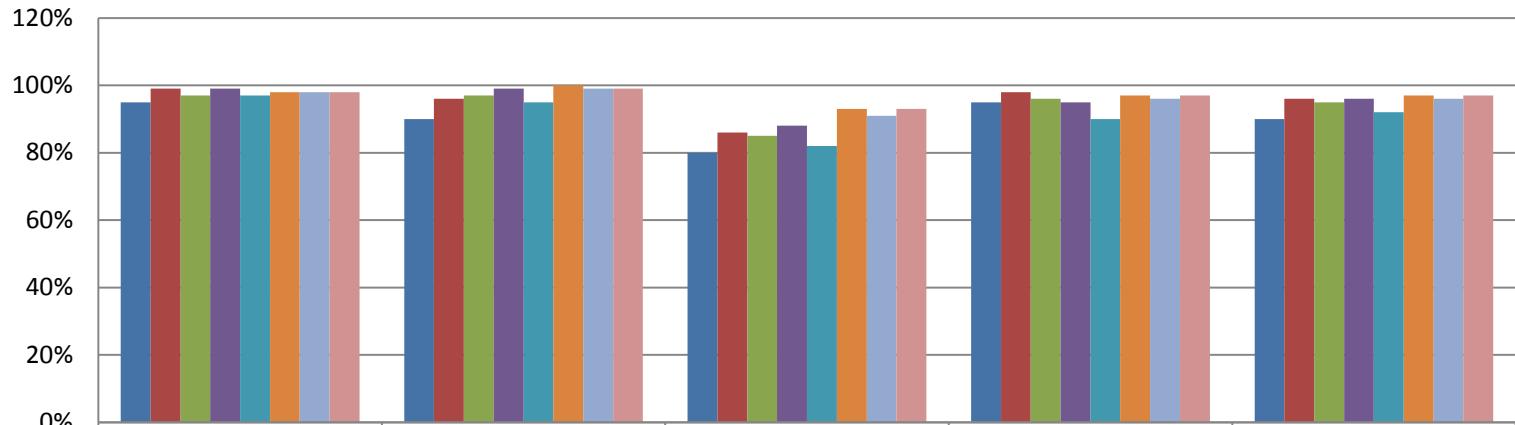




June 2018 Data Report

Brevard C.A.R.E.S. Data	Reference	June 2017	July 2017	August 2017	September 2017	October 2017	November 2017	December 2017	January 2018	February 2018	March 2018	April 2018	May 2018	June 2018
Total Number of Children Served by the Agency	CSP TA1	864	896	884	815	786	799	834	847	883	834	644	617	599
Total Number of Families Served by the Agency	CSP TA1	381	388	389	365	353	353	365	371	378	357	292	284	282
Total Number of Client Complaints & Trackers	RQ BC 1005	0	0	0	0	0	0	0	0	0	0	0	0	0
Total Number of Critical Incident Reports	RQ BC 1005	1	0	1	0	0	0	0	1	1	2	3	1	1
Increase Natural Supports participating in FTC to 60% (QRT)	BFP CAP	67%			70%			69%			67%			67%
Percent of Satisfied Families Successfully Completing (*not final FTC Survey)	PQI	100%	100%*	100%	100%	100%	100%	100%	100%	50%	100%	100%	100%	100%
Participate in 6 community awareness events	CSP A1.3, CSP A3.1 & 2, CSP A4.2, CSP B2.1, BFPSP 1b,	0	0	0	0	2	0	0	1	2	1	3	1	1
Secure one media feature story on child abuse prevention success	CSP B2.1	1	0	0	0	0	1	0	0	0	1	0	1	0
Increase revenue from new sources by \$20,000	CSP A1.4, CSP TB1.1, BFPSP 1c	0.00	0	0	0	0	0	0	0	0	0	0	0	0
Meetings to advocate for prevention resources with community leaders, decision-makers, and the Brevard legislative delegation	CSP B2.2	0	1	0	0	0	0	5	6	1	1	0	0	0
Meetings to promote C.A.R.E.S. as an evidence-based practice	CSP B2.3	0	1	0	0	0	0	5	5	0	0	0	0	0
Engage all six state legislative offices in at least one activity or event	CSP TB2.1	0	0	0	0	0	0	0	0	0	0	0	0	0
Total Monthly Match	BFP Contract	\$ 746.48	\$ 1,145.33	\$ 398.04	\$ 1,341.95	\$ 2,869.67	\$ 947.78	\$ 1,450.21	\$ 975.10	\$ 1,070.16	\$ 2,248.81	\$ 659.11	\$ 300.00	\$ 605.09

CARES Outcomes 2017-2018

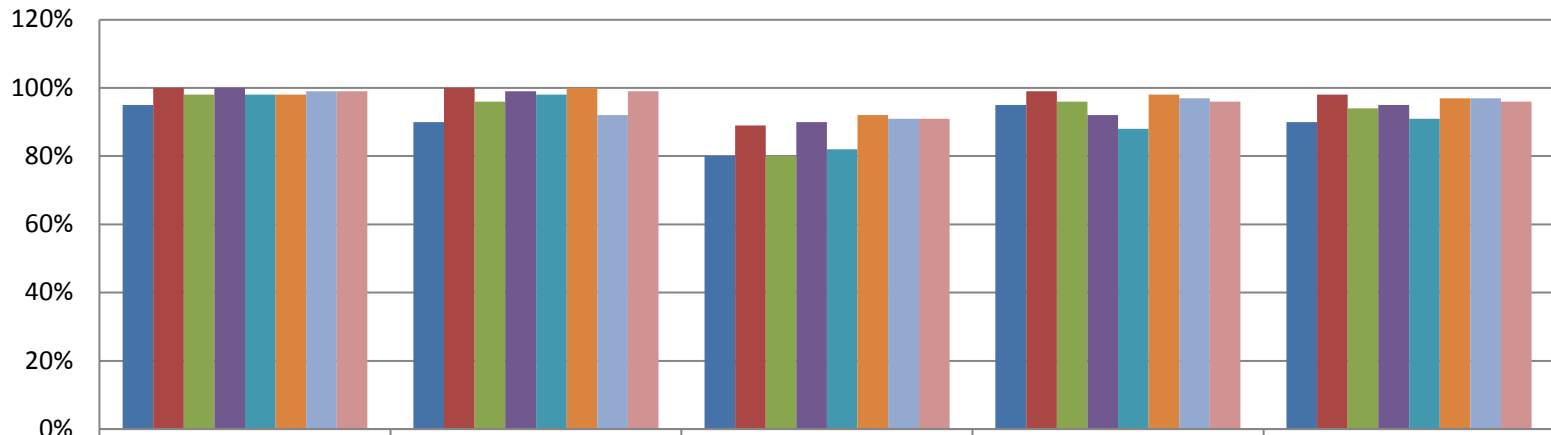


	Safety Outcome	Wraparound Outcome	Natural Supports Outcome	Quality Assurance Outcome	Overall Outcome
■ Target	95%	90%	80%	95%	90%
■ April 2017	99%	96%	86%	98%	96%
■ May 2017	97%	97%	85%	96%	95%
■ June 2017	99%	99%	88%	95%	96%
■ Qrt 1 2017-18	97%	95%	82%	90%	92%
■ Qrt 2 2017-18	98%	100%	93%	97%	97%
■ Qrt 3 2017-18	98%	99%	91%	96%	96%
■ Qrt 4 2017-18	98%	99%	93%	97%	97%

C.A.R.E.S. Program Data		June 2017	July 2017	August 2017	September 2017	October 2017	November 2017	December 2017	January 2018	February 2018	March 2018	April 2018	May 2018	June 2018
Number of Bypass Referrals	PQI	36	35	0	0	19	36	8	0	32	22	28	36	0
Number of new Prevention cases	PQI	33	22	30	19	23	28	20	27	26	20	11	11	16
Number of new Prevention children	PQI	79	47	65	43	54	73	51	61	76	52	34	26	40
Number of Children Served in Prevention	PQI	514	539	512	443	412	459	469	474	513	435	260	243	240
Number of Families Served in Prevention	PQI	200	208	203	184	169	183	187	191	199	166	102	95	93
DCF/Case Management Referrals	BFP SP 1c	34	23	47	25	39	26	28	26	24	27	11	12	18
Self/Community/211 Referrals	BFP SP 1c	4	2	8	3	2	2	1	0	1	1	1	1	0
Percent of Children Seen	BFP Contract		31%	30%	26%	32%	23%	23%	18%	24%	32%	43%	39%	38%
Number of Removals During Open Services	BFP FVP		0	5	4	1	0	1	0	2	0	0	0	0
Wraparound Fidelity	CSP OA1		95%	100%	N/A	95%	N/A	N/A	N/A	N/A	N/A	100%	96%	N/A
For all families referred by CPI determined to be safe but high/very high risk that fail to engage, at least 3 attempts to contact were made within the first 2 business days of receipt of referral	BFP CAP									100%	100%	100%	100%	100%
Percent of Children seen timely	BFP CAP								18%	24%	32%	43%	39%	38%
The initial FTC is completed within the established timeframes (QRT)	BFP CAP										98%		100%	94%
Percent of Family Teams with 50% Informal and Community Supports	CSP A1.1, BFP CAP	65%	QRT	QRT	54%	QRT	33%	50%	57%	45%	69%	25%	62%	0%
Ongoing supervisor reviews at a minimum of bi-monthly (no more than 62 days between)	BFP CAP									47%	99%	99%	99%	81%

C.A.R.E.S. Program Case Closure Data		June 2017	July 2017	August 2017	September 2017	October 2017	November 2017	December 2017	January 2018	February 2018	March 2018	April 2018	May 2018	June 2018
Total number of FSN closures	PQI	13	42	33	30	12	12	23	22	54	64	16	20	18
Case Supervision Completed/ Outcomes Achieved	PQI	1	3	7	5	2	1	13	6	12	9	2	3	1
Service Provision Completed	PQI	4	13	16	12	4	7	6	6	23	26	5	9	9
Family Requests Services Close	PQI	0	0	1	1	0	0	0	1	0	0	0	0	0
Service Refused by Family/ no legal grounds	PQI	2	3	2	0	1	0	1	0	0	4	1	1	0
Other	PQI	2	9	1	6	0	0	2	4	4	13	2	3	4
Family Whereabout Unknown/ Reasonable Efforts	PQI	4	14	6	6	5	4	1	5	15	12	6	4	4
For all families referred by CPI determined to be safe but high/very high risk that fail to engage, at least 3 attempts to contact were made within the first 2 business days of receipt of referral	BFP CAP									100%	100%	100%	100%	100%
Percent of Successfully Closed Cases without Verified Abuse 6 months	BFP Contract	100%	83%	92%	100%	100%	88%	100%	100%	100%	92%	82%	100%	100%
Percent of Satisfied Families Successfully Completing (*not final FTC Survey)	PQI	100%	NA	100%	100%	100%	100%	100%	100%	100%	100%	100%	100%	100%
C.A.R.E.S. Program Caseload Data		June 2017	July 2017	August 2017	September 2017	October 2017	November 2017	December 2017	January 2018	February 2018	March 2018	April 2018	May 2018	June 2018
Monthly Average Per Care Coordinator (# of Families)	PQI	35	37	37	34	31	35	36	36	39	32	20	19	18
Monthly Average Per Family Partner (# of Families)	PQI	12	10	8	8	6	5	4	5	3	2	0	0	1
Average length of Participation	PQI	124	140	131	130	141	144	150	131	108	100	100	109	101
Percent of Families with a Transition Plan	PQI	100%	100%	100%	100%	100%	100%	92%	80%	83%	80%	100%	100%	100%

Prevention Outcomes 2017-2018

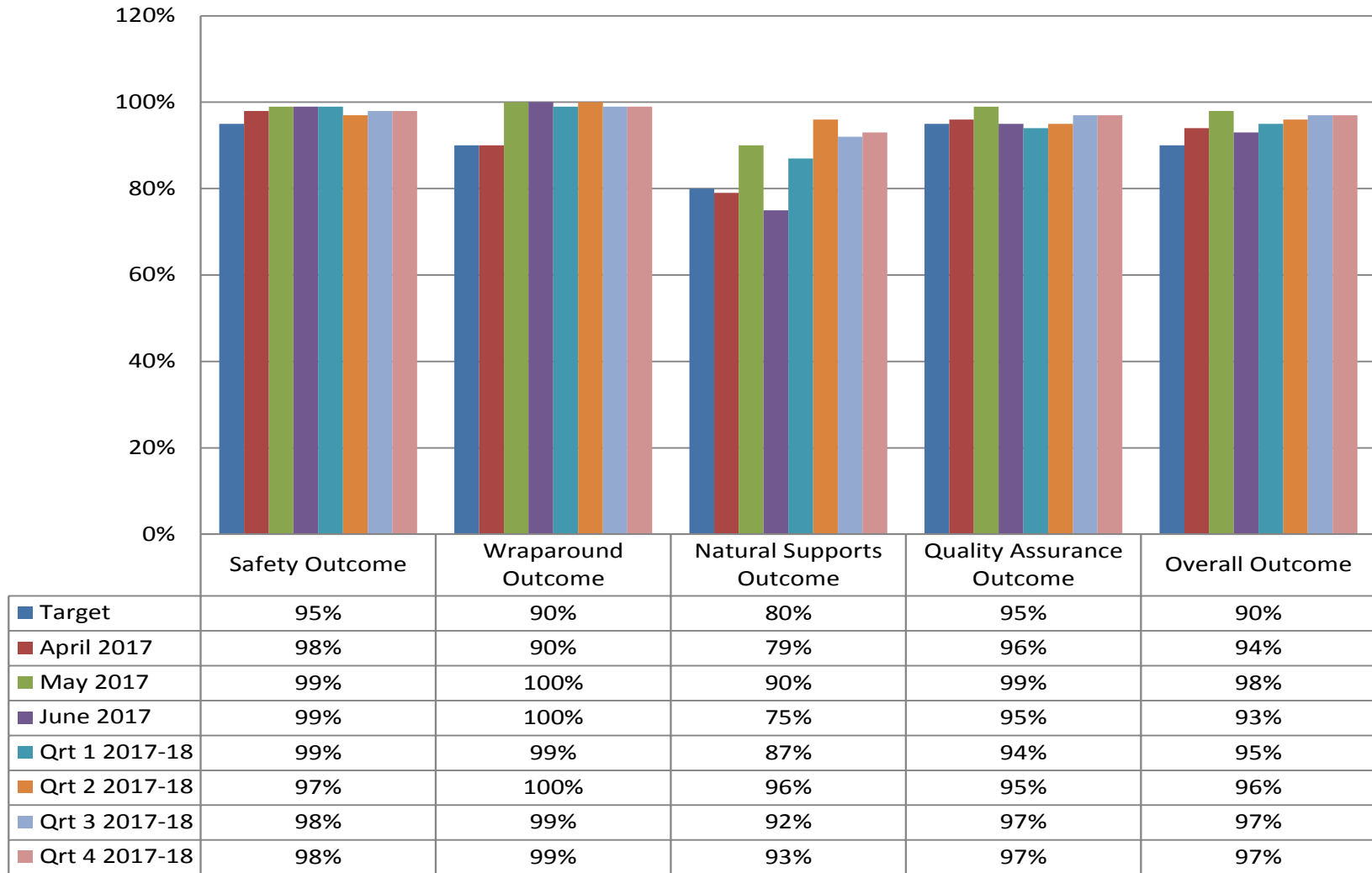


	Safety Outcome	Wraparound Outcome	Natural Supports Outcome	Quality Assurance Outcome	Overall Outcome
■ Target	95%	90%	80%	95%	90%
■ April 2017	100%	100%	89%	99%	98%
■ May 2017	98%	96%	80%	96%	94%
■ June 2017	100%	99%	90%	92%	95%
■ Qrt 1 2017-18	98%	98%	82%	88%	91%
■ Qrt 2 2017-18	98%	100%	92%	98%	97%
■ Qrt 3 2017-18	99%	92%	91%	97%	97%
■ Qrt 4 2017-18	99%	99%	91%	96%	96%

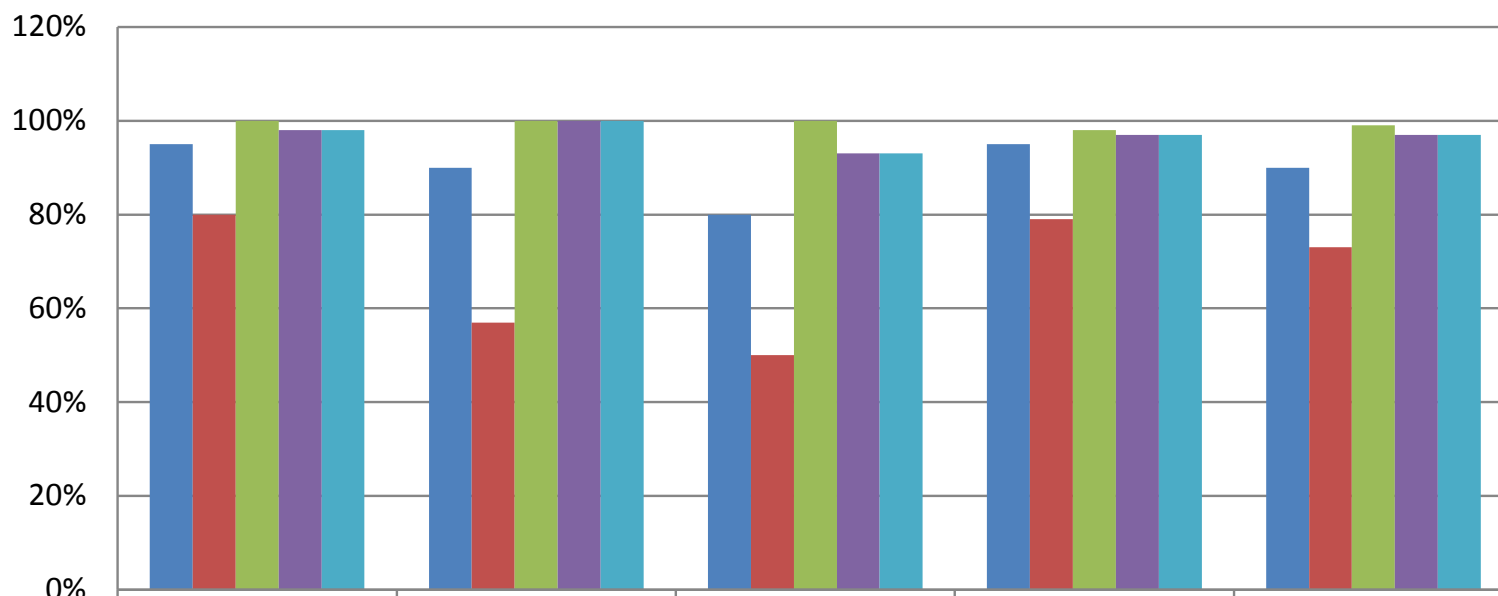
NJIHS Data		June 2017	July 2017	August 2017	September 2017	October 2017	November 2017	December 2017	January 2018	February 2018	March 2018	April 2018	May 2018	June 2018
Number of new NJIHS cases	PQI	14	13	18	15	12	15	11	10	13	15	17	16	24
Number of new NJIHS children	PQI	32	32	36	31	22	27	27	21	24	33	33	25	43
Number of Families Served in Non Judicial In Home Services	PQI	86	85	94	103	105	102	103	106	102	107	114	115	119
Number of Children Served in Non Judicial In Home Services	PQI	194	199	220	246	241	233	234	244	231	248	258	252	236
Percent of Children Seen	BFP Contract	84%	99%	100%	99%	99%		100	99.5%	99.5%	99.1	98%	99.6	99%
Number of Removals During Open Services	BFP FVP, CFSR	1	0	3	0	5	2	1	3	0	1	2	2	2
Percent of Family Teams with 40% Informal and Community Supports	BFPSP 1a, CFSR	13%	QRT	QRT	100%	QRT		50%	33%	57%	100%	89%	20%	80%
Percent of OFFA completed within 30 days of case transfer staffing	PQI			34%	44%	58%	51%	66%	61%	67%	68%	70%	77%	73%
Number of NJ Staff Wraparound Certified (including supervisor)	BFPSP 1a, CFSR	3						3	3	3	3	3	3	3
Number of NJ Staff Child Welfare Certified (including supervisor)	CFSR	6	4	4	4	4	4	4	4	4	4	4	5	4
Percent of cases where Barriers to achieving success has been discussed and identified within the CARE plan	CFSR	100%								QRT	100%	100%	n/a	100%
NJIHS Case Closure Reasons		June 2017	July 2017	August 2017	September 2017	October 2017	November 2017	December 2017	January 2018	February 2018	March 2018	April 2018	May 2018	June 2018
Total number of FSN closures	PQI	9	5	1	7	7	0	10	9	7	2	8	10	10
Case Supervision Completed/ Outcomes Achieved	CFSR	7	2	1	1	5	0	5	5	4	1	4	3	6
Service Provision Completed	CFSR	2	2	0	3	1	0	4	0	0	1	1	5	1
Family Requests Services Close	PQI	0	0	0	0	0	0	1	1	1	0	0	0	1
Other	PQI	0	1	0	3	1	0		3	2	0	3	2	2
Percent of Successfully Closed Cases without Verified Abuse 6 months	CFSR, DCF Scorecard		93%	95%	94%	94%	NA	95%		96%	98%	95%	94%	
Percent of Satisfied Families Successfully Completing (*not final FTC Survey)	PQI	100%	100%*	100%*	100%	100%	100%	100%	100%	100%	100%	100%	n/a	100%

NJHS Caseload Data		June 2017	July 2017	August 2017	September 2017	October 2017	November 2017	December 2017	January 2018	February 2018	March 2018	April 2018	May 2018	June 2018
Monthly Average of Families Per Care Coordinator	PQI	17	28	31	17	21	17	17	18	17	18	19	17	17
Monthly Average of Children Per Care Coordinator	PQI	37	66	73	41	49	39	39	41	38	41	43	36	34
Average length of Participation	PQI	101	127	124	153	156	165	182	203	151	146	140	138	118
Percentage of Home Visits Completed Timely for the Month*	PQI	80%	99%	100%	99%	99%	100%	100%	99.5%	99.5%	99.1%	98%	99.6%	99%
Percentage Approved Ongoing Family Functioning Assessment	CFSR	43%	41%	34%	44%	58%	51%	66%	61%	67%	68%	70%	77%	73%
Percent of Families with a Transition Plan	CFSR	89%	60%	100%	75%	71%	n/a	50%	78%	86%	100%	89%	80%	80%

NJHS Outcomes 2017-18



Post Adoption Outcomes 2017-18



	Safety Outcome	Wraparound Outcome	Natural Supports Outcome	Quality Assurance Outcome	Overall Outcome
■ Target	95%	90%	80%	95%	90%
■ Qrt 1 2017-18	80%	57%	50%	79%	73%
■ Qrt 2 2017-18	100%	100%	100%	98%	99%
■ Qrt 3 2017-18	98%	100%	93%	97%	97%
■ Qrt 4 2017-18	98%	100%	93%	97%	97%

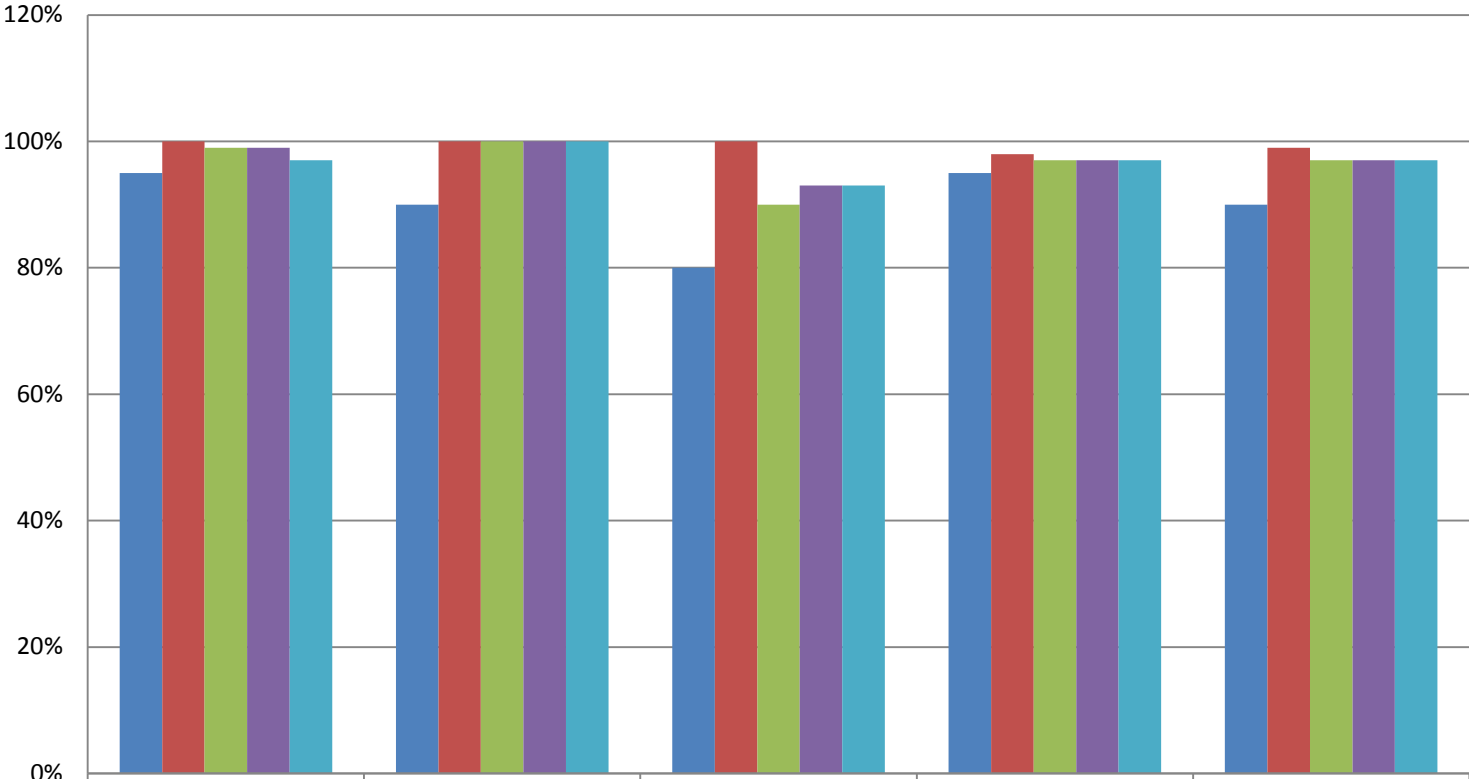
Head Start Services Data		June 2017	July 2017	August 2017	September 2017	October 2017	November 2017	December 2017	January 2018	February 2018	March 2018	April 2018	May 2018	June 2018
Number of New Children Served by Head Start Coordinator	PQI		1	10	5	10	3	5	1	3	6	7	2	0
Number of Children Served by Head Start Coordinator	PQI	29	64	69	47	5	46	61	64	77	86	62	57	54
Number of Families Served by Head Start Coordinator	PQI	70	28	29	20	23	21	26	28	33	37	30	28	25
Total number of FSFN closures	PQI		3	11	4	5	0	0	0	0	9	4	3	2
Percent of Satisfied Families Successfully Completing (*not final FTC Survey)	PQI	100%	NA	100%	100%*	100%*	100%*	100*	100*	100%*	100%	100%	100%	n/a

Mobile Response Team Data		June 2017	July 2017	August 2017	September 2017	October 2017	November 2017	December 2017	January 2018	February 2018	March 2018	April 2018	May 2018	June 2018
Number of Calls Received	CFG		32	43	22	33	59	33	34	30	77	37	49	48
Number of Telephonic Crisis Response Assessments	CFG		25	19	14	20	21	16	28	24	63	31	40	37
Number of Onsite Crisis Response Assessments	CFG		15	15	9	13	7	10	6	6	14	6	9	11
Number of Post Assessment Staffings Attended (aftercare followup)	CFG		20	8	0	0	1	0	1	0	1	4	0	1
Number of Children Served by Mobile Response Team	CFG	32	53	15	52	61	27	38	41	30	49	22	47	38
Percent of Children with Placement Disruption	BFP Contract	0%	0	0%	0%	0	0	0	0	0	0	0	0	0
Percent of Calls with Timely Onsite Crisis Response	BFP Contract	100%	100%	100%	100%	100%	100%	100%	100%	1	100%	100%	100%	100%

Targeted Case Management Data		June 2017	July 2017	August 2017	September 2017	October 2017	November 2017	December 2017	January 2018	February 2018	March 2018	April 2018	May 2018	June 2018
Number of New TCM cases	CSP A1.5, BFPSP 1c	1	5	0	0	0	0	1	0	3	1	0	0	0
Number of New TCM children	CSP A1.5, BFPSP 1c		4	0	0	0	0	0	0	3	1	0	0	0
Number of New TCM adults	CSP A1.5, BFPSP 1c		1	0	0	0	0	1	0	0	0	0	0	0
Number of Children Served by TCM	CSP A1.5, BFPSP 1c		4	2	2	2	2	2	2	5	5	4	1	1
Number of Adults Served by TCM	CSP A1.5, BFPSP 1c		1	1	1	1	1	2	1	1	1	0	0	0
Number of Families Served in Prevention	CSP A1.5, BFPSP 1c		5	3	3	3	3	4	3	6	5	3	0	0
Monthly Average of Children Per TCM	PQI		4	3	3	3	3	3	3	3	3	3	2.8	2.8
Monthly Average of Adults Per TCM	PQI		1	1	1	1	1	2	2	1	1	1	0.8	0.8
Average length of Participation	PQI			NA	NA	NA	NA	5 month	5	5	5	5	5	5
Implement Medicaid Billing, with a target of target \$50,000 in billable services	CSP A1.5, BFPSP 1c		\$ 504.00		\$ 1,166.00	\$ 1,008.00	\$ 900.00	\$ 840.00	\$ 852.00	\$924	\$1,140	\$740	\$456	\$468

Safety Management Services Data		June 2017	July 2017	August 2017	September 2017	October 2017	November 2017	December 2017	January 2018	February 2018	March 2018	April 2018	May 2018	June 2018	
Number of New Children Served by Safety Management Services	BFP FVP	8	7	14	11	8	29	9	21	14	15	6	19	9	
Number of New Families Served by Safety Management Services	PQI	4	4	6	5	5	9	4	9	6	7	4	7	5	
Number of Cases Served by Safety Management Services Team	PQI	24	10	17	15	20	20	16	25	23	23	18	18	14	
Number of Children Removed During Services	BFP FVP	3	1	0	2	5	3	0	0	1	6	2	3	0	
Number of Children Removed Post Closure	BFP FVP			4	0	0	0	0	0	0	0	0	0	0	
Percent of Satisfied Families	PQI	100%	100%	NA	NA	100%	100%	100*	100%	NA	NA	100*	NA	100%	
Percent of initial contacts completed or attempted with the family within 2 hours of the initial request for services during business hours or within 4 hours after business hours	BFP CAP									100%	100%	100%	100%	100%	100%
Percent of FANS completed within first 7 days of services	BFP CAP									71%	100%	100%	100%	100%	100%

Safety Management Services Outcomes 2017-18



	Safety Outcome	Wraparound Outcome	Natural Supports Outcome	Quality Assurance Outcome	Overall Outcome
■ Target	95%	90%	80%	95%	90%
■ Qrt 1 2017-18	100%	100%	100%	98%	99%
■ Qrt 2 2017-18	99%	100%	90%	97%	97%
■ Qrt 3 2017-18	99%	100%	93%	97%	97%
■ Qrt 4 2017-18	97%	100%	93%	97%	97%

Homelessness Data		May 2017	July 2017	August 2017	September 2017	October 2017	November 2017	December 2017	January 2018	February 2018	March 2018	April 2018	May 2018
Number of New Homeless Prevention cases (HMIS Data)	CSP A2.2		5	6	3	8	3	5	1	1	2	2	4
Number of New Homeless Prevention children (HMIS Data)			12	12	10	26	10	12	4	2	6	6	9
Total Homeless Prevention cases (HMIS Data)	CSP A2.2		5	8	4	8	3	5	2	3	4	5	7
Total Homeless Prevention children (HMIS Data)			12	15	12	26	10	12	5	7	10	13	16
Number of New Homeless cases (HMIS Data)	CSP A2.2		4	2	2	3	6	2	3	1	2	2	4
Number of New Homeless children (HMIS Data)			10	9	8	13	15	5	6	4	7	3	11
Total Homeless cases (HMIS Data)	CSP A2.2, CSP TA2		4	5	2	3	8	8	9	11	13	13	16
Total Homeless children (HMIS Data)			10	17	12	13	22	20	13	20	27	26	30
Percent of Families Rehoused	CSP A2.2		NA	0%	0	0	0	0	100%	71%	13%	45%	46%
Percent of Children Rehoused			NA	0%	0	0	0	0	100%	78%	8%	34%	39%
Total Number of Children Served under HfH			NA	12	17	20	14	14	11	11	11	13	10
Total Number of Families Served under HfH	CSP TA2		NA	5	7	8	6	6	5	5	5	5	5
Secure \$80,000 to provide immediate, short-term crisis intervention for homeless families	CSP A2.4			\$ 6,634.37	\$ 3,252.32	\$ 8,700.10	\$ 3,308.84	\$ 3,019.32	\$3,171.09	\$ 4,418.20	\$ 3,310.25	\$ 7,855.40	\$ 9,001.50
Total Number of SPDATs completed (triage and full)	CSP A2.1									2	6	3	2
Brevard C.A.R.E.S. Management Team will participate in both the monthly Homeless Coalition meetings and in the Child Abuse Prevention Task Force Meetings	CSP A2.3	Both	BHC	Both	BHC	Both	Both	None	Both	Both	Both	Both	Both

Cribs for Kids Data		June 2017	July 2017	August 2017	September 2017	October 2017	November 2017	December 2017	January 2018	February 2018	March 2018	April 2018	May 2018	June 2018
Number of Safe Sleep Classes (target 40)	CSP A3.1	4	3	5	3	12	5	5	5	5	4	7	4	4
Number of Cribs for Kids Pack and Plays Distributed (target 400)	CSP A3.3, CSP TA3	19	16	23	22	27	21	9	13	14	14	28	3	15
Number of Pack and Plays Distributed as Tangible Resource	CSP A3.3,	4	11	11	5	3	7	8	13	7	7	3	8	12
Raise \$24,000 through sponsorship program for Cribs for Kids	CSP A3.4, CSP TB1.2		\$ -	\$ -	\$ -	\$ -	\$ -	\$ -	\$ -	\$ -				