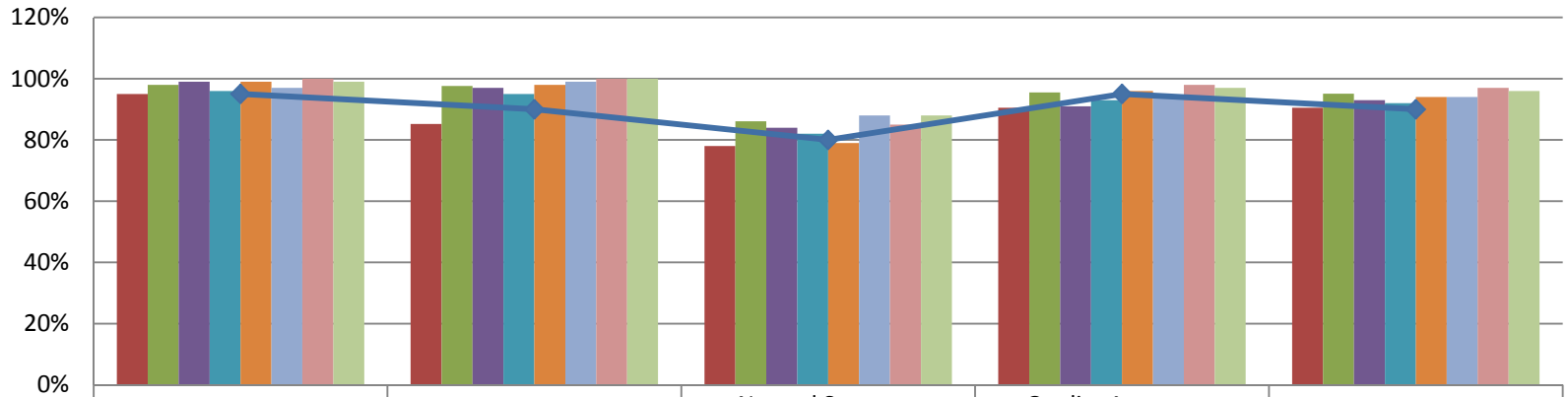




January 2017 Data Report

<b>Brevard C.A.R.E.S. Data</b>	November 2015	July 2016	August 2016	September 2016	October 2016	November 2016	December 2016	January 2017
Total Number of Children Served by the Agency	1123	1489	1380	1020	857	806	771	768
Total Number of Families Served by the Agency	529	675	618	450	376	353	341	346

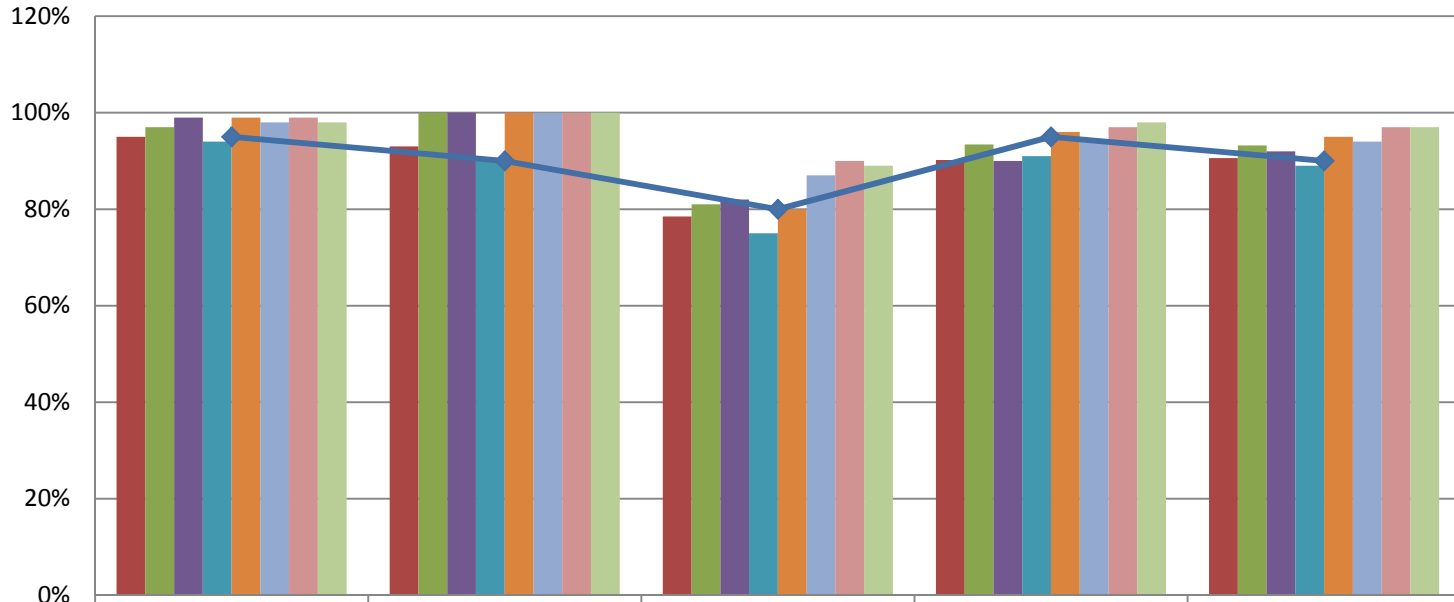
### CARES Outcomes 2016-2017



	Safety Outcome	Wraparound Outcome	Natural Supports Outcome	Quality Assurance Outcome	Overall Outcome
October 2015	95%	85%	78%	91%	91%
July 2016	98%	98%	86%	96%	95%
August 2016	99%	97%	84%	91%	93%
September 2016	96%	95%	82%	93%	92%
October 2016	99%	98%	79%	96%	94%
November 2016	97%	99%	88%	94%	94%
December 2016	100%	100%	85%	98%	97%
January 2017	99%	100%	88%	97%	96%
Target	95%	90%	80%	95%	90%

<b>Prevention Data</b>	November 2015	July 2016	August 2016	September 2016	October 2016	November 2016	December 2016	January 2017
Number of new Prevention cases	66	22	28	20	21	19	13	12
Number of new Prevention children	134	36	78	43	51	43	30	30
Number of Children Served in Prevention	857	1135	1057	692	503	451	432	425
Number of Families Served in Prevention	395	491	446	280	194	173	166	166
DCF/Case Management Referrals		20	26	15	14	15	17	8
Self/Community/211 Referrals		1	2	3	7	5	3	5
<b>Case Closure Reasons</b>	November 2015	July 2016	August 2016	September 2016	October 2016	November 2016	December 2016	January 2017
Total number of FSFN closures	73	64	170	100	38	22	15	16
Case Supervision Completed/ Outcomes Achieved	2	3	12	7	6	5	1	4
Service Provision Completed	27	25	55	46	16	8	5	9
Family Requests Services Close	6	0	8	4	1	0	2	0
Service Refused by Family/ no legal grounds	8	8	32	5	4	2	3	1
Other	21	12	27	27	1	3	1	2
Family Whereabout Unknown/ Reasonable Efforts		16	36	11	10	4	3	0
<b>Caseload Data</b>	November 2015	July 2016	August 2016	September 2016	October 2016	November 2016	December 2016	January 2017
Monthly Average Per Care Coordinator (# of Families)	28	55	55	42	33	32	32	28
Monthly Average Per Family Partner (# of Families)	28	72	58	36	14	4	8	4
Average length of Participation	109	177	161	164	147	159	177	157
Percent of Families with a Transition Plan		75%	75%	N/A	100%	100%	100%	75%

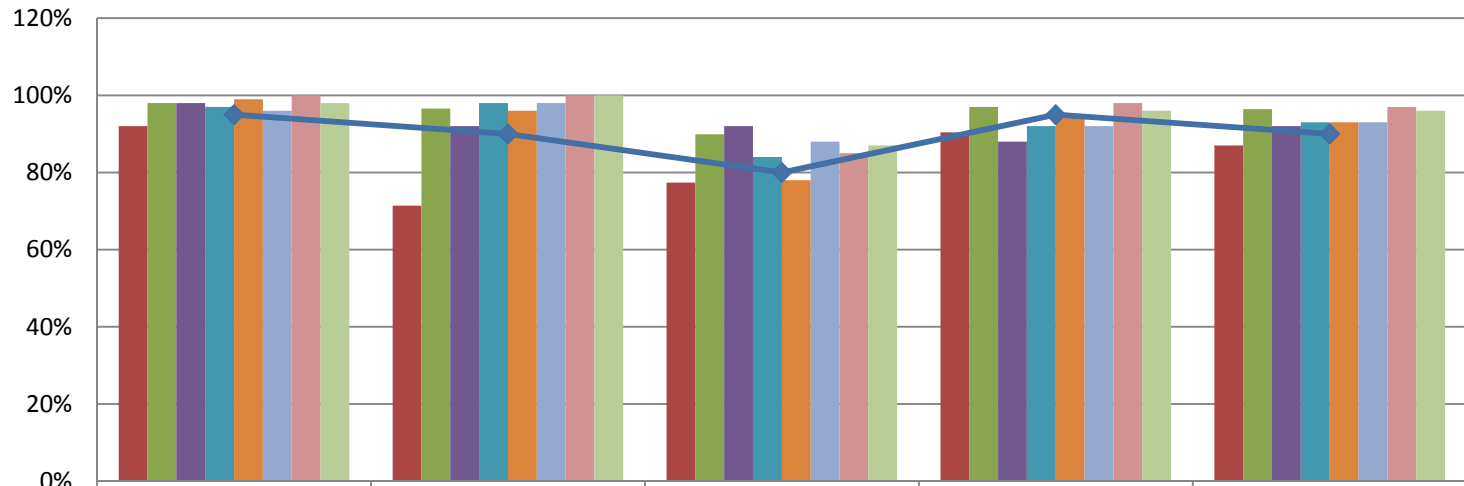
## Prevention Outcomes 2016-2017



	Safety Outcome	Wraparound Outcome	Natural Supports Outcome	Quality Assurance Outcome	Overall Outcome
October 2015	95%	93%	79%	90%	91%
July 2016	97%	100%	81%	93%	93%
August 2016	99%	100%	82%	90%	92%
September 2016	94%	90%	75%	91%	89%
October 2016	99%	100%	80%	96%	95%
November 2016	98%	100%	87%	94%	94%
December 2016	99%	100%	90%	97%	97%
January 2017	98%	100%	89%	98%	97%
Target	95%	90%	80%	95%	90%

<b>Child Welfare Team Data</b>	November 2015	July 2016	August 2016	September 2016	October 2016	November 2016	December 2016	January 2017
Number of new NJIHS cases	8	15	13	3	11	11	9	15
Number of new NJIHS children	14	25	24	7	26	28	21	26
Number of Families Served in Non Judicial In Home Services	75	102	92	82	78	80	71	76
Number of Children Served in Non Judicial In Home Services	173	228	209	187	177	182	155	161
<b>Case Closure Reasons</b>	November 2015	July 2016	August 2016	September 2016	October 2016	November 2016	December 2016	January 2017
Total number of FSFN closures	8	9	8	6	1	10	3	6
Case Supervision Completed/ Outcomes Achieved	5	6	5	3	0	5	0	6
Service Provision Completed	1	0	2	1	1	3	1	0
Family Requests Services Close	1	0	0	2	0	1	2	0
Other	0	3	1	0	0	1	0	0
<b>Caseload Data</b>	November 2015	July 2016	August 2016	September 2016	October 2016	November 2016	December 2016	January 2017
Monthly Average of Families Per Care Coordinator	13	17	15	14	13	13	12	13
Monthly Average of Children Per Care Coordinator	29	38	35	32	30	30	26	27
Average length of Participation	155	111	116	132	138	130	123	115
Percentage of Home Visits Completed Timely for the Month	100%	84%	97%	99.80%	87.00%	89.00%	100.00%	100%
Percentage Approved Ongoing Family Functioning Assessment	53%	49%	85%	76.67%	86.00%	67.74%	no data	82%
Percent of Families with a Transition Plan	50%	50%	96%	92.90%	100.00%	60.00%	33.30%	100%

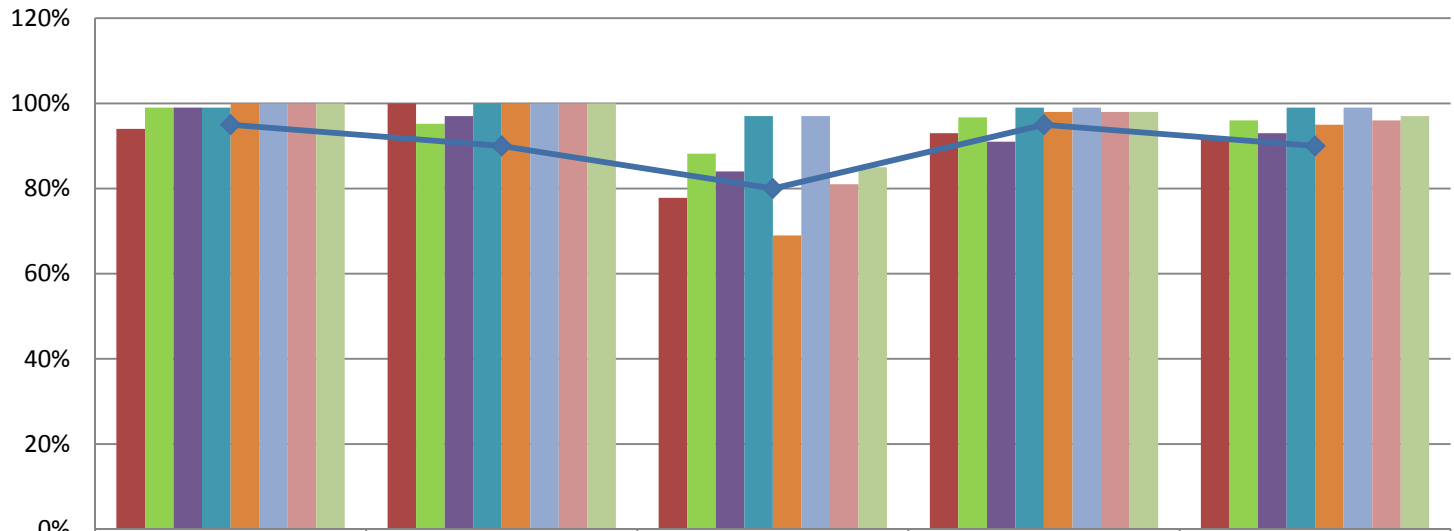
## Child Welfare Outcomes 2016-17



	Safety Outcome	Wraparound Outcome	Natural Supports Outcome	Quality Assurance Outcome	Overall Outcome
October 2015	92%	71%	77%	90%	87%
July 2016	98%	97%	90%	97%	96%
August 2016	98%	92%	92%	88%	92%
September 2016	97%	98%	84%	92%	93%
October 2016	99%	96%	78%	95%	93%
November 2016	96%	98%	88%	92%	93%
December 2016	100%	100%	85%	98%	97%
January	98%	100%	87%	96%	96%
◆ Target	95%	90%	80%	95%	90%

<b>Community Services Data</b>	November 2015	July 2016	August 2016	September 2016	October 2016	November 2016	December 2016	January 2017
Number of Families Served in Post Adoption (in state)	50	62	64	66	70	66	66	66
Number of Children Served in Post Adoption (in state)	67	81	81	83	88	82	81	83
Number of Families Served by Head Start Coordinator	10	20	15	21	30	31	34	36
Number of Children Served by Head Start Coordinator	27	45	31	54	80	86	93	97
Number of Children Served by Safety Management Services Team	21	45	46	39	44	44	65	69
Number of Cases Served by Safety Management Services Team	9	20	21	18	21	23	26	25
Number of Children Served by Mobile Response Team	59	42	29	47	43	35	40	55
Number of Cribs for Kids Pack and Plays Distributed	42	29	24	38	27	39	14	22

## Community Services Outcomes 2016-17



	Safety Outcome	Wraparound Outcome	Natural Supports Outcome	Quality Assurance Outcome	Overall Outcome
October 2015	94%	100%	78%	93%	92%
July 2016	99%	95%	88%	97%	96%
August 2016	99%	97%	84%	91%	93%
September 2016	99%	100%	97%	99%	99%
October 2016	100%	100%	69%	98%	95%
November 2016	100%	100%	97%	99%	99%
December 2016	100%	100%	81%	98%	96%
January 2017	100%	100%	85%	98%	97%
Target	95%	90%	80%	95%	90%