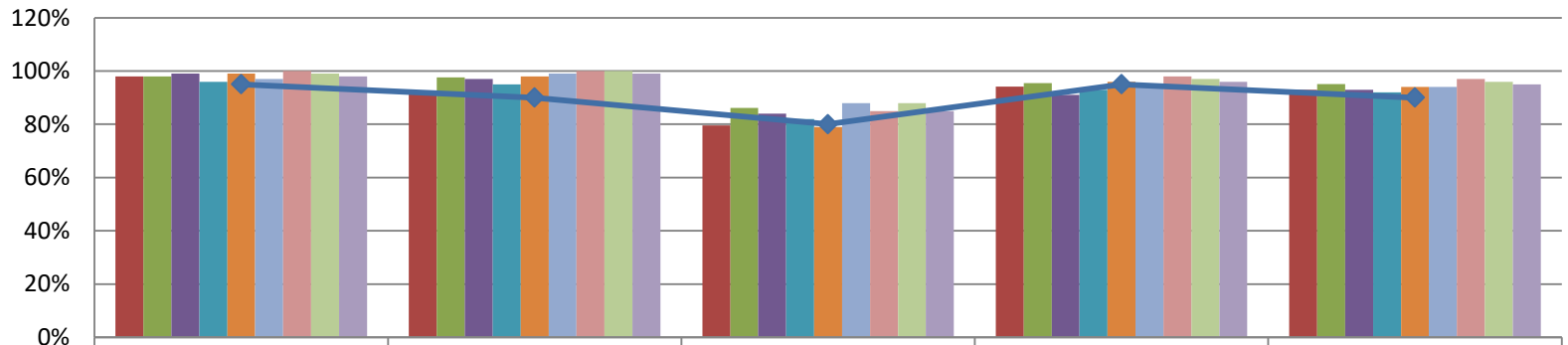




## February 2017 Data Report

| <b>Brevard C.A.R.E.S. Data</b>                | February 2016 | July 2016 | August 2016 | September 2016 | October 2016 | November 2016 | December 2016 | January 2017 | February 2017 |
|---|---------------|-----------|-------------|----------------|--------------|---------------|---------------|--------------|---------------|
| Total Number of Children Served by the Agency | 1593          | 1489      | 1380        | 1020           | 857          | 806           | 771           | 768          | 797           |
| Total Number of Families Served by the Agency | 740           | 675       | 618         | 450            | 376          | 353           | 341           | 346          | 358           |

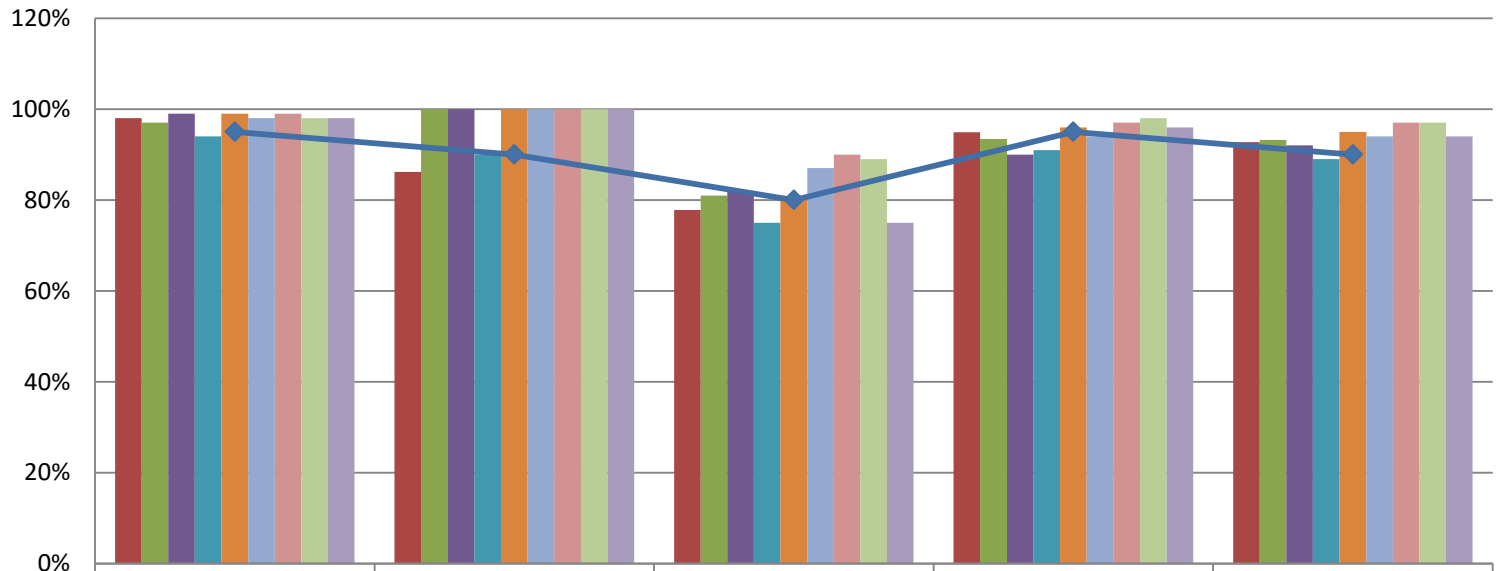
### CARES Outcomes 2016-2017



|                | Safety Outcome | Wraparound Outcome | Natural Supports Outcome | Quality Assurance Outcome | Overall Outcome |
|----------------|----------------|--------------------|--------------------------|---------------------------|-----------------|
| February       | 98%            | 93%                | 80%                      | 94%                       | 93%             |
| July 2016      | 98%            | 98%                | 86%                      | 96%                       | 95%             |
| August 2016    | 99%            | 97%                | 84%                      | 91%                       | 93%             |
| September 2016 | 96%            | 95%                | 82%                      | 93%                       | 92%             |
| October 2016   | 99%            | 98%                | 79%                      | 96%                       | 94%             |
| November 2016  | 97%            | 99%                | 88%                      | 94%                       | 94%             |
| December 2016  | 100%           | 100%               | 85%                      | 98%                       | 97%             |
| January 2017   | 99%            | 100%               | 88%                      | 97%                       | 96%             |
| February       | 98%            | 99%                | 85%                      | 96%                       | 95%             |
| Target         | 95%            | 90%                | 80%                      | 95%                       | 90%             |

| <b>Prevention Data</b>                               | February 2016 | July 2016 | August 2016 | September 2016 | October 2016 | November 2016 | December 2016 | January 2017 | February 2017 |
|--|---------------|-----------|-------------|----------------|--------------|---------------|---------------|--------------|---------------|
| Number of new Prevention cases                       | 73            | 22        | 28          | 20             | 21           | 19            | 13            | 12           | 27            |
| Number of new Prevention children                    | 166           | 36        | 78          | 43             | 51           | 43            | 30            | 30           | 62            |
| Number of Children Served in Prevention              | 1278          | 1135      | 1057        | 692            | 503          | 451           | 432           | 425          | 447           |
| Number of Families Served in Prevention              | 575           | 491       | 446         | 280            | 194          | 173           | 166           | 166          | 175           |
| DCF/Case Management Referrals                        |               | 20        | 26          | 15             | 14           | 15            | 17            | 8            | 27            |
| Self/Community/211 Referrals                         |               | 1         | 2           | 3              | 7            | 5             | 3             | 5            | 3             |
| <b>Case Closure Reasons</b>                          | February 2016 | July 2016 | August 2016 | September 2016 | October 2016 | November 2016 | December 2016 | January 2017 | February 2017 |
| Total number of FSFN closures                        | 26            | 64        | 170         | 100            | 38           | 22            | 15            | 16           | 52            |
| Case Supervision Completed/<br>Outcomes Achieved     | 0             | 3         | 12          | 7              | 6            | 5             | 1             | 4            | 11            |
| Service Provision Completed                          | 8             | 25        | 55          | 46             | 16           | 8             | 5             | 9            | 26            |
| Family Requests Services Close                       | 2             | 0         | 8           | 4              | 1            | 0             | 2             | 0            | 0             |
| Service Refused by Family/ no legal grounds          | 7             | 8         | 32          | 5              | 4            | 2             | 3             | 1            | 2             |
| Other  | 6             | 12        | 27          | 27             | 1            | 3             | 1             | 2            | 4             |
| Family Where-about Unknown/<br>Reasonable Efforts    | 3             | 16        | 36          | 11             | 10           | 4             | 3             | 0            | 9             |
| <b>Caseload Data</b>                                 | February 2016 | July 2016 | August 2016 | September 2016 | October 2016 | November 2016 | December 2016 | January 2017 | February 2017 |
| Monthly Average Per Care Coordinator (# of Families) | 62            | 55        | 55          | 42             | 33           | 32            | 32            | 28           | 34            |
| Monthly Average Per Family Partner (# of Families)   | 62            | 72        | 58          | 36             | 14           | 4             | 8             | 4            | 4             |
| Average length of Participation                      | 118           | 177       | 161         | 164            | 147          | 159           | 177           | 157          | 162           |
| Percent of Families with a Transition Plan           |               | 75%       | 75%         | N/A            | 100%         | 100%          | 100%          | 75%          | 100%          |

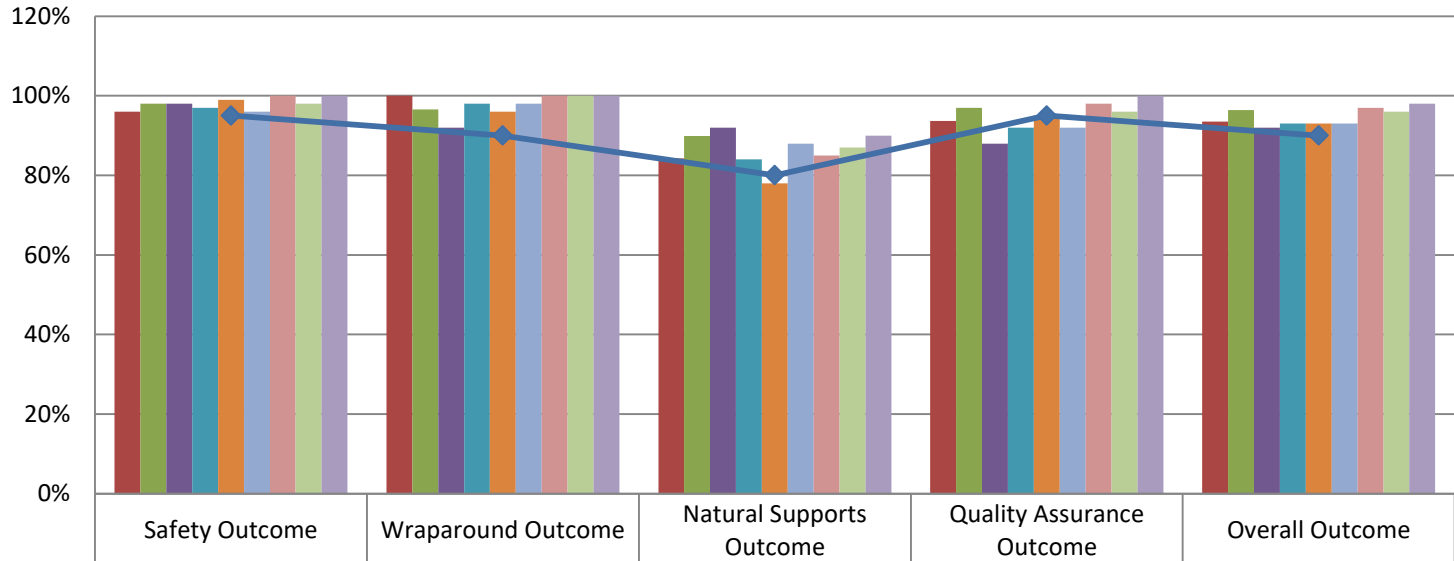
## Prevention Outcomes 2016-2017



|                | Safety Outcome | Wraparound Outcome | Natural Supports Outcome | Quality Assurance Outcome | Overall Outcome |
|----------------|----------------|--------------------|--------------------------|---------------------------|-----------------|
| February       | 98%            | 86%                | 78%                      | 95%                       | 93%             |
| July 2016      | 97%            | 100%               | 81%                      | 93%                       | 93%             |
| August 2016    | 99%            | 100%               | 82%                      | 90%                       | 92%             |
| September 2016 | 94%            | 90%                | 75%                      | 91%                       | 89%             |
| October 2016   | 99%            | 100%               | 80%                      | 96%                       | 95%             |
| November 2016  | 98%            | 100%               | 87%                      | 94%                       | 94%             |
| December 2016  | 99%            | 100%               | 90%                      | 97%                       | 97%             |
| January 2017   | 98%            | 100%               | 89%                      | 98%                       | 97%             |
| February 2017  | 98%            | 100%               | 75%                      | 96%                       | 94%             |
| Target         | 95%            | 90%                | 80%                      | 95%                       | 90%             |

| <b>Child Welfare Team Data</b>                             | February 2016 | July 2016 | August 2016 | September 2016 | October 2016 | November 2016 | December 2016 | January 2017 | February 2017 |
|--|---------------|-----------|-------------|----------------|--------------|---------------|---------------|--------------|---------------|
| Number of new NJIHS cases                                  | 8             | 15        | 13          | 3              | 11           | 11            | 9             | 15           | 11            |
| Number of new NJIHS children                               | 14            | 25        | 24          | 7              | 26           | 28            | 21            | 26           | 18            |
| Number of Families Served in Non Judicial In Home Services | 75            | 102       | 92          | 82             | 78           | 80            | 71            | 76           | 76            |
| Number of Children Served in Non Judicial In Home Services | 173           | 228       | 209         | 187            | 177          | 182           | 155           | 161          | 154           |
| <b>Case Closure Reasons</b>                                | February 2016 | July 2016 | August 2016 | September 2016 | October 2016 | November 2016 | December 2016 | January 2017 | February 2017 |
| Total number of FSFN closures                              | 8             | 9         | 8           | 6              | 1            | 10            | 3             | 6            | 1             |
| Case Supervision Completed/ Outcomes Achieved              | 5             | 6         | 5           | 3              | 0            | 5             | 0             | 6            | 1             |
| Service Provision Completed                                | 0             | 0         | 2           | 1              | 1            | 3             | 1             | 0            | 0             |
| Family Requests Services Close                             | 0             | 0         | 0           | 2              | 0            | 1             | 2             | 0            | 0             |
| Other  | 3             | 3         | 1           | 0              | 0            | 1             | 0             | 0            | 0             |
| <b>Caseload Data</b>                                       | February 2016 | July 2016 | August 2016 | September 2016 | October 2016 | November 2016 | December 2016 | January 2017 | February 2017 |
| Monthly Average of Families Per Care Coordinator           | 13            | 17        | 15          | 14             | 13           | 13            | 12            | 13           | 13            |
| Monthly Average of Children Per Care Coordinator           | 29            | 38        | 35          | 32             | 30           | 30            | 26            | 27           | 26            |
| Average length of Participation                            | 136           | 111       | 116         | 132            | 138          | 130           | 123           | 115          | 114           |
| Percentage of Home Visits Completed Timely for the Month*  | 100%          | 84%       | 97%         | 99.80%         | 87.00%       | 89.00%        | 100.00%       | 100%         | 100%*         |
| Percentage Approved Ongoing Family Functioning Assessment  | 89%           | 49%       | 85%         | 76.67%         | 86.00%       | 67.74%        | no data       | 82%          | 93%           |
| Percent of Families with a Transition Plan                 | 94%           | 50%       | 96%         | 92.90%         | 100.00%      | 60.00%        | 33.30%        | 100%         | 100%          |

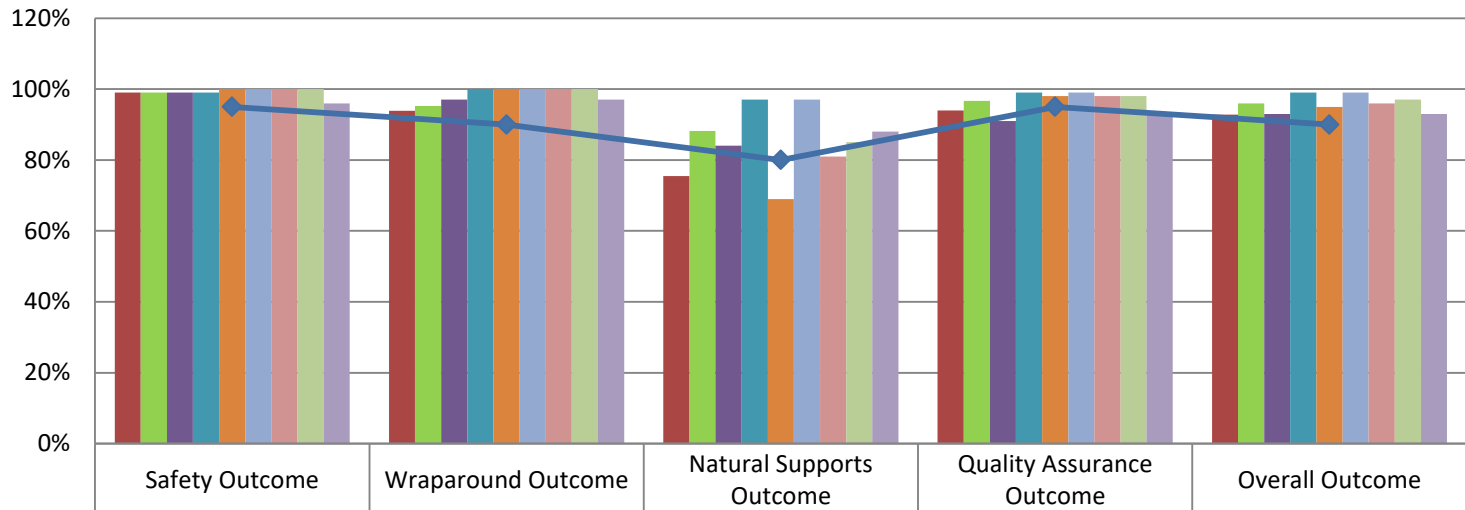
## Child Welfare Outcomes 2016-17



|                | Safety Outcome | Wraparound Outcome | Natural Supports Outcome | Quality Assurance Outcome | Overall Outcome |
|----------------|----------------|--------------------|--------------------------|---------------------------|-----------------|
| February       | 96%            | 100%               | 84%                      | 94%                       | 94%             |
| July 2016      | 98%            | 97%                | 90%                      | 97%                       | 96%             |
| August 2016    | 98%            | 92%                | 92%                      | 88%                       | 92%             |
| September 2016 | 97%            | 98%                | 84%                      | 92%                       | 93%             |
| October 2016   | 99%            | 96%                | 78%                      | 95%                       | 93%             |
| November 2016  | 96%            | 98%                | 88%                      | 92%                       | 93%             |
| December 2016  | 100%           | 100%               | 85%                      | 98%                       | 97%             |
| January        | 98%            | 100%               | 87%                      | 96%                       | 96%             |
| February       | 100%           | 100%               | 90%                      | 100%                      | 98%             |
| Target         | 95%            | 90%                | 80%                      | 95%                       | 90%             |

| <b>Community Services Data</b>                               | February 2016 | July 2016 | August 2016 | September 2016 | October 2016 | November 2016 | December 2016 | January 2017 | February 2017 |
|--|---------------|-----------|-------------|----------------|--------------|---------------|---------------|--------------|---------------|
| Number of Families Served in Post Adoption (in state)        | 54            | 62        | 64          | 66             | 70           | 66            | 66            | 66           | 65            |
| Number of Children Served in Post Adoption (in state)        | 71            | 81        | 81          | 83             | 88           | 82            | 81            | 83           | 82            |
| Number of Families Served by Head Start Coordinator          | 27            | 20        | 15          | 21             | 30           | 31            | 34            | 36           | 38            |
| Number of Children Served by Head Start Coordinator          | 61            | 45        | 31          | 54             | 80           | 86            | 93            | 97           | 101           |
| Number of Children Served by Safety Management Services Team | 22            | 45        | 46          | 39             | 44           | 44            | 65            | 69           | 74            |
| Number of Cases Served by Safety Management Services Team    | 12            | 20        | 21          | 18             | 21           | 23            | 26            | 25           | 27            |
| Number of Children Served by Mobile Response Team            | 122           | 42        | 29          | 47             | 43           | 35            | 40            | 55           | 56            |
| Number of Cribs for Kids Pack and Plays Distributed          | 29            | 29        | 24          | 38             | 27           | 39            | 14            | 22           | 18            |

## Community Services Outcomes 2016-17



|                | Safety Outcome | Wraparound Outcome | Natural Supports Outcome | Quality Assurance Outcome | Overall Outcome |
|----------------|----------------|--------------------|--------------------------|---------------------------|-----------------|
| February       | 99%            | 94%                | 76%                      | 94%                       | 93%             |
| July 2016      | 99%            | 95%                | 88%                      | 97%                       | 96%             |
| August 2016    | 99%            | 97%                | 84%                      | 91%                       | 93%             |
| September 2016 | 99%            | 100%               | 97%                      | 99%                       | 99%             |
| October 2016   | 100%           | 100%               | 69%                      | 98%                       | 95%             |
| November 2016  | 100%           | 100%               | 97%                      | 99%                       | 99%             |
| December 2016  | 100%           | 100%               | 81%                      | 98%                       | 96%             |
| January 2017   | 100%           | 100%               | 85%                      | 98%                       | 97%             |
| February 2017  | 96%            | 97%                | 88%                      | 93%                       | 93%             |
| ◆ Target       | 95%            | 90%                | 80%                      | 95%                       | 90%             |