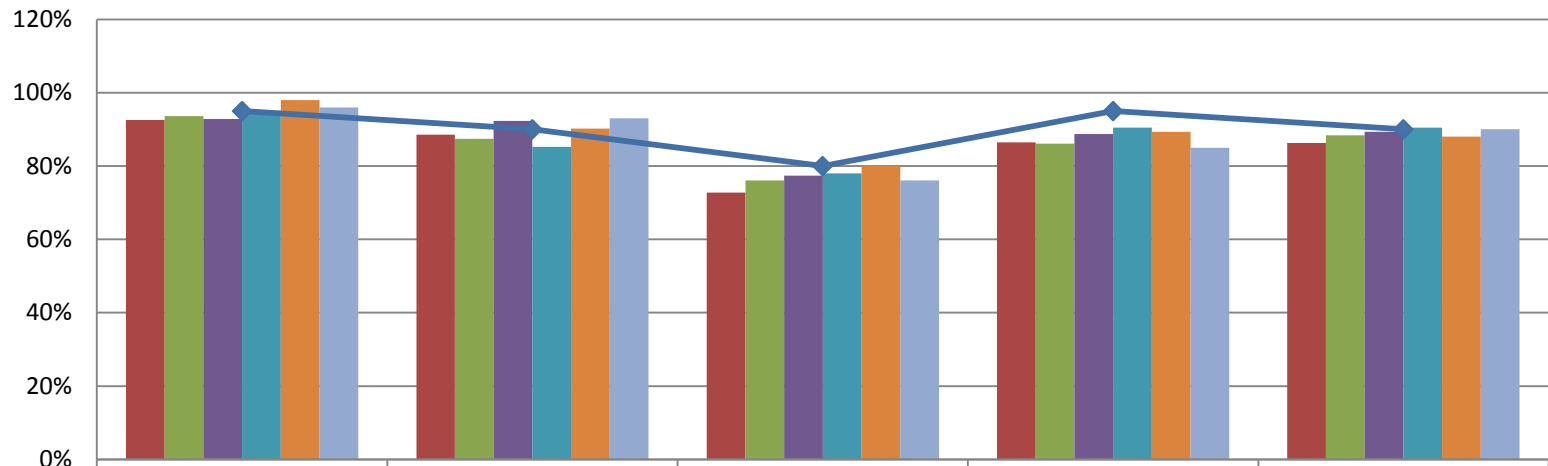




## December 2015 Data Report

Brevard C.A.R.E.S. Data	July	August	Sept	Oct	Nov	Dec
Total Number of Children Served by the Agency	1389	1296	1149	1158	1123	1172
Total Number of Families Served by the Agency	631	594	540	543	529	545

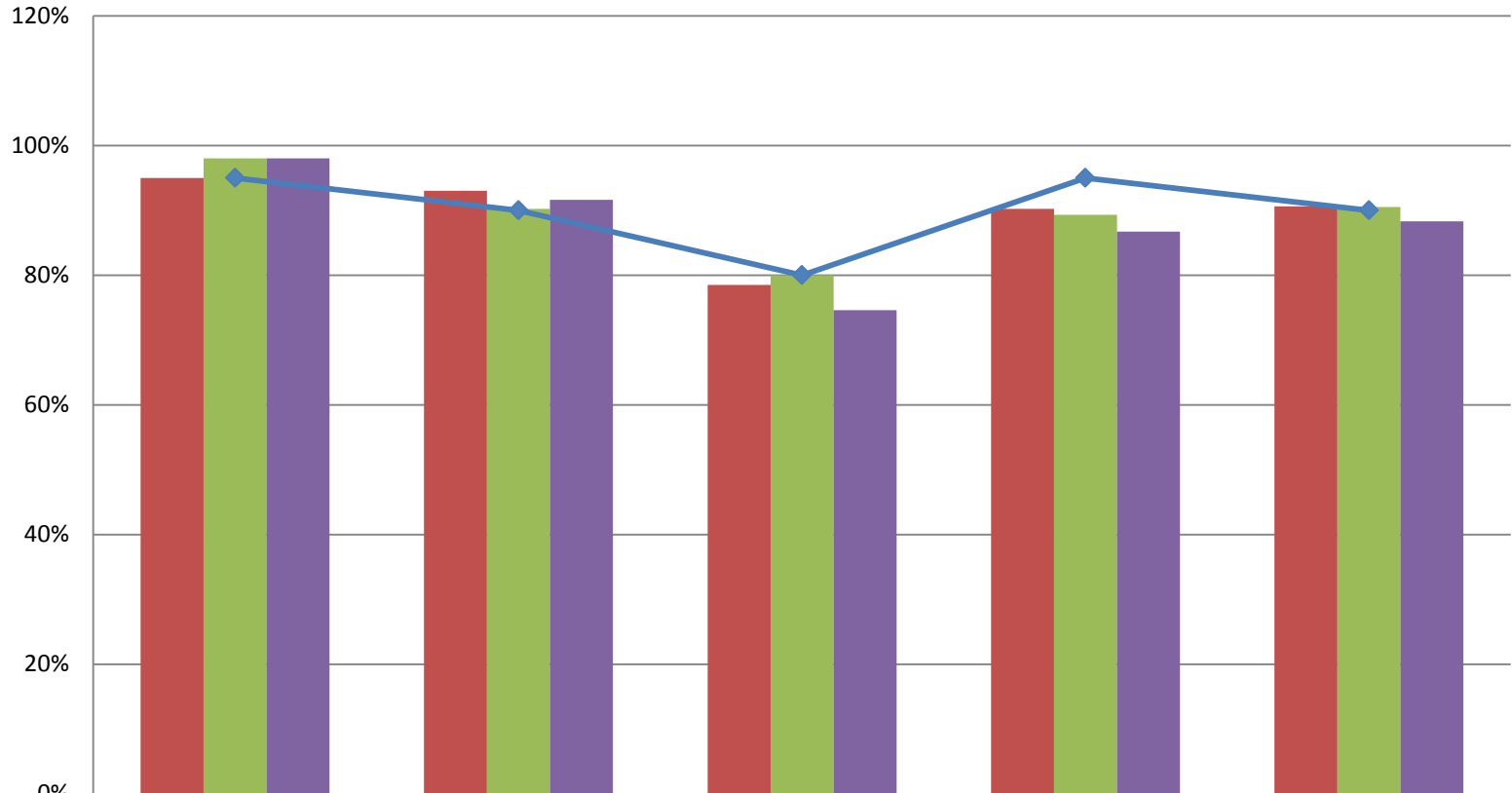
### C.A.R.E.S. Outcomes



	Safety Outcome	Wraparound Outcome	Natural Supports Outcome	Quality Assurance Outcome	Overall Outcome
July	93%	89%	73%	87%	86%
August	94%	87%	76%	86%	88%
September	93%	92%	77%	89%	89%
October	95%	85%	78%	91%	91%
November	98%	90%	80%	89%	88%
December	96%	93%	76%	85%	90%
Target	95%	90%	80%	95%	90%

<b>Prevention Data</b>	July	August	Sept	Oct	Nov	Dec
Number of new Prevention cases	54	92	80	40	66	92
Number of new Prevention children				91	134	206
Number of Children Served in Prevention	1104	1016	887	870	857	879
Number of Families Served in Prevention	493	462	412	395	395	400
DCF/Case Management Referrals	25	20	28	26	21	56
Self/Community/211 Referrals	29	71	49	49	52	45
<b>Case Closure Reasons</b>	July	August	Sept	Oct	Nov	Dec
Total number of FSFN closures	103	141	43	69	73	19
Case Supervision Completed/ Outcomes Achieved				0	2	6
Service Provision Completed				17	27	2
Family Requests Services Close				1	6	1
Service Refused by Family/ no legal grounds				1	8	4
Other				50	21	6
<b>Caseload Data</b>	July	August	Sept	Oct	Nov	Dec
Monthly Average Per Care Coordinator (# of Families)	58	39	37	29	28	42
Monthly Average Per Family Partner (# of Families)	32	33	28	29	28	29
Average length of Participation	590	170	471	159	109	130
Percent of Families with a Transition Plan	29%	47%	100%		100%	100%

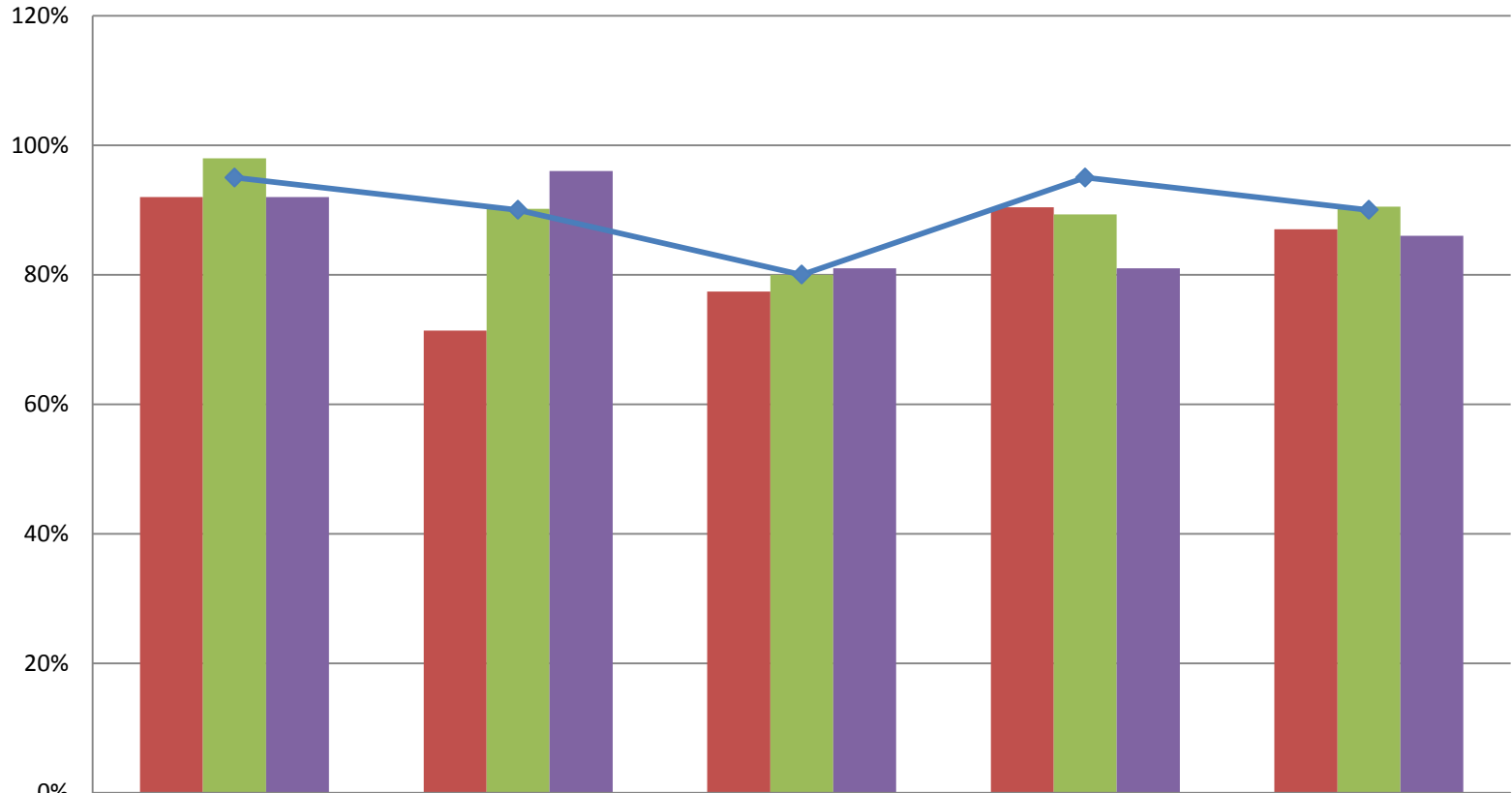
## Prevention Outcomes



	Safety Outcome	Wraparound Outcome	Natural Supports Outcome	Quality Assurance Outcome	Overall Outcome
October	95%	93%	79%	90%	91%
November	98%	90%	80%	89%	91%
December	98%	92%	75%	87%	88%
Target	95%	90%	80%	95%	90%

<b>Child Welfare Team Data</b>	Oct-14	July	August	Sept	Oct	Nov	Dec
Number of new NJIHS cases	9	11	8	8	12	8	11
Number of new NJIHS children		30			21	14	27
Number of Families Served in Non Judicial In Home Services	53	77	74	85	75	75	76
Number of Children Served in Non Judicial In Home Services	116	176	166	206	168	173	184
<b>Case Closure Reasons</b>	Oct-14	July	August	Sept	Oct	Nov	Dec
Total number of FSFN closures	3	3	4	9	8	8	4
Case Supervision Completed/ Outcomes Achieved					5	5	3
Service Provision Completed					1	1	0
Family Requests Services Close					1	1	0
Other					1		1
<b>Caseload Data</b>	Oct-14	July	August	Sept	Oct	Nov	Dec
Monthly Average of Families Per Care Coordinator	14	16	16	14	15	13	13
Monthly Average of Children Per Care Coordinator	28	38	38	34	35	29	30
Average length of Participation	197	211	158	166	148	155	150
Percentage of Home Visits Completed Timely for the Month	100%	99.60%		100%	100%	100%	100%
Percentage Approved Ongoing Family Functioning Assessment					65%	53%	78%
Percent of Families with a Transition Plan	60%	100%	0%	50%	63%	50%	75%

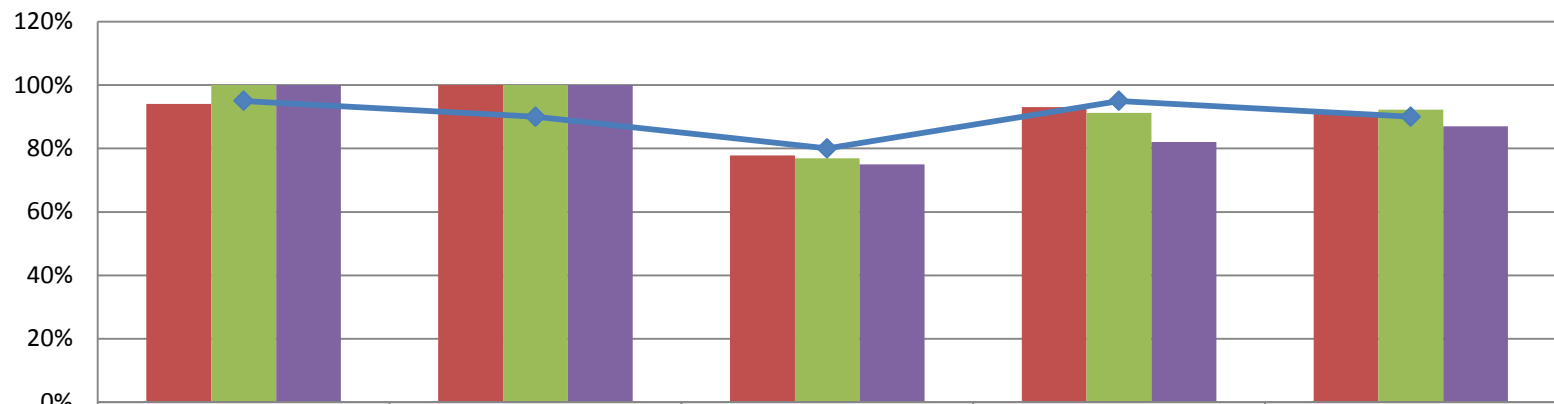
## Child Welfare Outcomes



	Safety Outcome	Wraparound Outcome	Natural Supports Outcome	Quality Assurance Outcome	Overall Outcome
October	92%	71%	77%	90%	87%
November	98%	90%	80%	89%	91%
December	92%	96%	81%	81%	86%
Target	95%	90%	80%	95%	90%

Community Services Data	July	August	Sept	Oct	Nov	Dec
Number of Families Served in Post Adoption (in state)	37	38	42	45	50	50
Number of Children Served in Post Adoption (in state)	44	54	59	61	67	67
Number of Families Served by Head Start Coordinator				6	10	12
Number of Children Served by Head Start Coordinator				15	27	28
Number of Children Served by Safety Management Services Team	36	27	21	18	21	19
Number of Cases Served by Safety Management Services Team	11	8	8	7	9	11
Number of Children Served by Mobile Response Team	51	40	49	61	59	64
Number of Cribs for Kids Pack and Plays Distributed	14	28	55	29	42	9

### Community Services Outcomes



	Safety Outcome	Wraparound Outcome	Natural Supports Outcome	Quality Assurance Outcome	Overall Outcome
October	94%	100%	78%	93%	92%
November	100%	100%	77%	91%	92%
December	100%	100%	75%	82%	87%
Target	95%	90%	80%	95%	90%