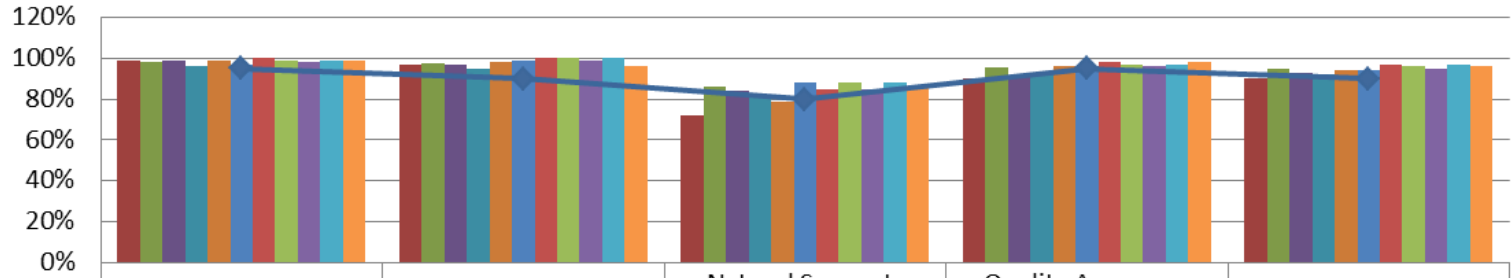




April 2017 Data Report

<b>Brevard C.A.R.E.S. Data</b>	April 2016	July 2016	August 2016	September 2016	October 2016	November 2016	December 2016	January 2017	February 2017	March 2017	April 2017
Total Number of Children Served by the Agency	1692	1489	1380	1020	857	806	771	768	797	760	849
Total Number of Families Served by the Agency	798	675	618	450	376	353	341	346	358	347	371

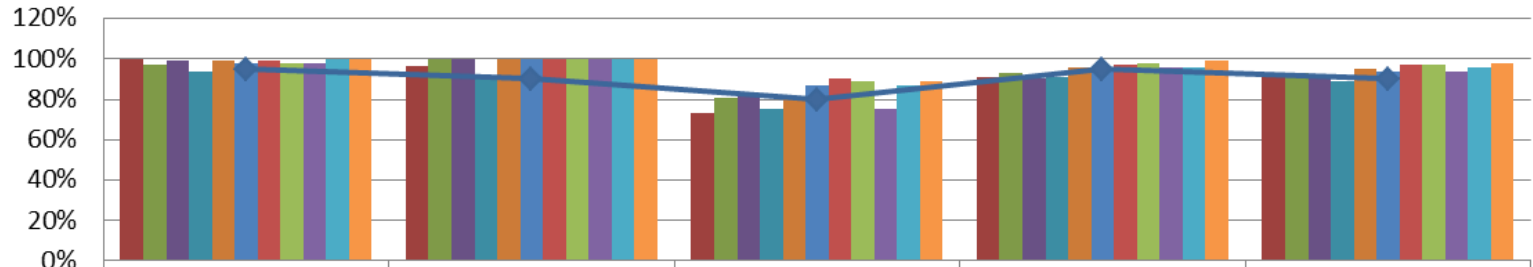
## CARES Outcomes 2016-2017



	Safety Outcome	Wraparound Outcome	Natural Supports Outcome	Quality Assurance Outcome	Overall Outcome
■ April 2016	99%	97%	72%	90%	90%
■ July 2016	98%	98%	86%	96%	95%
■ August 2016	99%	97%	84%	91%	93%
■ September 2016	96%	95%	82%	93%	92%
■ October 2016	99%	98%	79%	96%	94%
■ November 2016	97%	99%	88%	94%	94%
■ December 2016	100%	100%	85%	98%	97%
■ January 2017	99%	100%	88%	97%	96%
■ February	98%	99%	85%	96%	95%
■ March 2017	99%	100%	88%	97%	97%
■ April 2017	99%	96%	86%	98%	96%
◆ Target	95%	90%	80%	95%	90%

<b>Prevention Data</b>	April 2016	July 2016	August 2016	September 2016	October 2016	November 2016	December 2016	January 2017	February 2017	March 2017	April 2017
Number of new Prevention cases	61	22	28	20	21	19	13	12	27	41	36
Number of new Prevention children	134	36	78	43	51	43	30	30	62	108	112
Number of Children Served in Prevention	1361	1135	1057	692	503	451	432	425	447	403	482
Number of Families Served in Prevention	623	491	446	280	194	173	166	166	175	156	180
DCF/Case Management Referrals		20	26	15	14	15	17	8	27	37	35
Self/Community/211 Referrals		1	2	3	7	5	3	5	3	3	3
<b>Case Closure Reasons</b>	April 2016	July 2016	August 2016	September 2016	October 2016	November 2016	December 2016	January 2017	February 2017	March 2017	April 2017
Total number of FSFN closures	23	64	170	100	38	22	15	16	52	11	16
Case Supervision Completed/ Outcomes Achieved	2	3	12	7	6	5	1	4	11	1	5
Service Provision Completed	6	25	55	46	16	8	5	9	26	5	4
Family Requests Services Close	1	0	8	4	1	0	2	0	0	0	0
Service Refused by Family/ no legal grounds	4	8	32	5	4	2	3	1	2	0	1
Other	8	12	27	27	1	3	1	2	4	5	3
Family Whereabout Unknown/ Reasonable Efforts	2	16	36	11	10	4	3	0	9	0	3
<b>Caseload Data</b>	April 2016	July 2016	August 2016	September 2016	October 2016	November 2016	December 2016	January 2017	February 2017	March 2017	April 2017
Monthly Average Per Care Coordinator (# of Families)	73	55	55	42	33	32	32	28	34	26	30
Monthly Average Per Family Partner (# of Families)	81	72	58	36	14	4	8	4	4	9	14
Average length of Participation	133	177	161	164	147	159	177	157	162	117	114
Percent of Families with a Transition Plan		75%	75%	N/A	100%	100%	100%	75%	100%	100%	100%

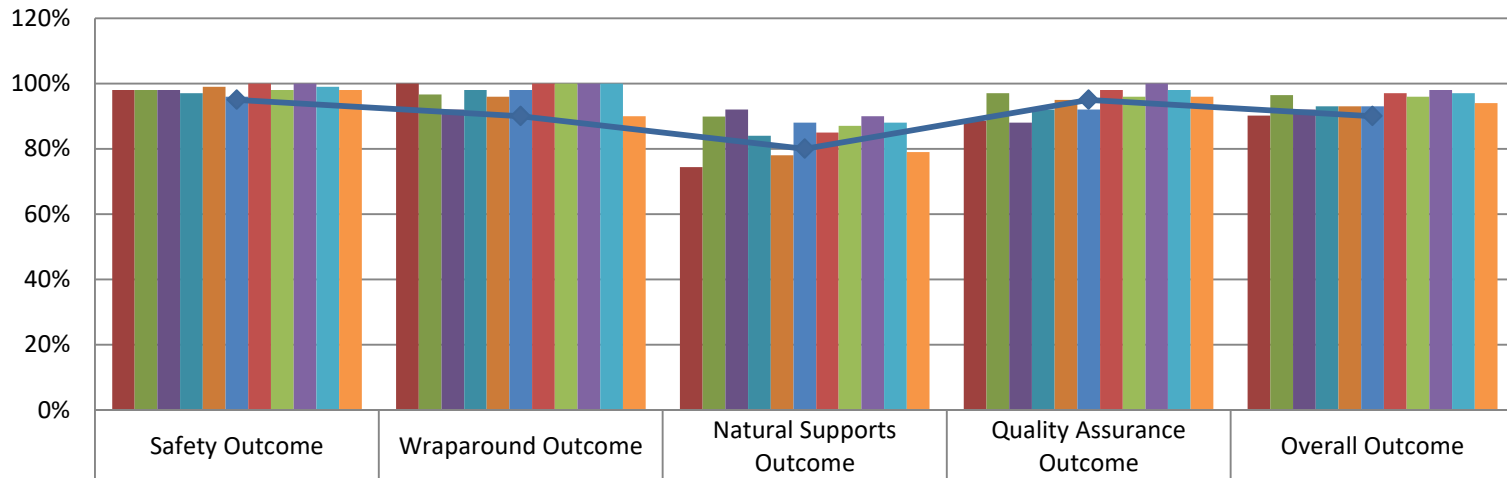
## Prevention Outcomes 2016-2017



	Safety Outcome	Wraparound Outcome	Natural Supports Outcome	Quality Assurance Outcome	Overall Outcome
■ April 2016	100%	97%	73%	91%	91%
■ July 2016	97%	100%	81%	93%	93%
■ August 2016	99%	100%	82%	90%	92%
■ September 2016	94%	90%	75%	91%	89%
■ October 2016	99%	100%	80%	96%	95%
■ November 2016	98%	100%	87%	94%	94%
■ December 2016	99%	100%	90%	97%	97%
■ January 2017	98%	100%	89%	98%	97%
■ February 2017	98%	100%	75%	96%	94%
■ March 2017	100%	100%	87%	96%	96%
■ April 2017	100%	100%	89%	99%	98%
◆ Target	95%	90%	80%	95%	90%

<b>Child Welfare Team Data</b>	April 2016	July 2016	August 2016	September 2016	October 2016	November 2016	December 2016	January 2017	February 2017	March 2017	April 2017
Number of new NJIHS cases	10	15	13	3	11	11	9	15	11	22	6
Number of new NJIHS children	27	25	24	7	26	28	21	26	18	41	19
Number of Families Served in Non Judicial In Home Services	90	102	92	82	78	80	71	76	76	92	87
Number of Children Served in Non Judicial In Home Services	192	228	209	187	177	182	155	161	154	185	189
<b>Case Closure Reasons</b>	April 2016	July 2016	August 2016	September 2016	October 2016	November 2016	December 2016	January 2017	February 2017	March 2017	April 2017
Total number of FSFN closures	3	9	8	6	1	10	3	6	1	4	8
Case Supervision Completed/ Outcomes Achieved	3	6	5	3	0	5	0	6	1	3	2
Service Provision Completed	0	0	2	1	1	3	1	0	0		1
Family Requests Services Close	0	0	0	2	0	1	2	0	0	1	4
Other	0	3	1	0	0	1	0	0	0		1
<b>Caseload Data</b>	April 2016	July 2016	August 2016	September 2016	October 2016	November 2016	December 2016	January 2017	February 2017	March 2017	April 2017
Monthly Average of Families Per Care Coordinator	15	17	15	14	13	13	12	13	13	15	15
Monthly Average of Children Per Care Coordinator	31	38	35	32	30	30	26	27	26	31	32
Average length of Participation	134	111	116	132	138	130	123	115	114	109	130
Percentage of Home Visits Completed Timely for the Month*	92%	84%	97%	100%	87%	89%	100%	100%	100%*	88%	86%
Percentage Approved Ongoing Family Functioning Assessment	44%	49%	85%	77%	86%	68%	no data	82%	93%	65%	68%
Percent of Families with a Transition Plan	100%	50%	96%	93%	100%	60%	33%	100%	100%	100%	100%

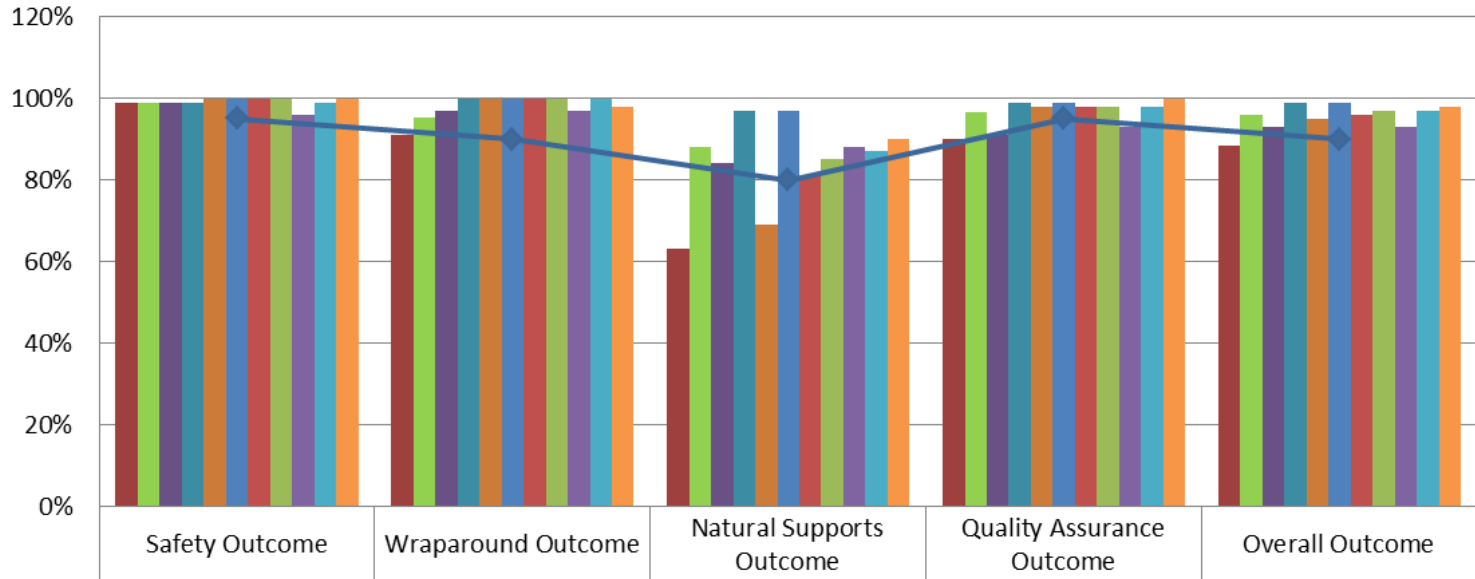
## Child Welfare Outcomes 2016-17



	Safety Outcome	Wraparound Outcome	Natural Supports Outcome	Quality Assurance Outcome	Overall Outcome
April 2016	98%	100%	74%	89%	90%
July 2016	98%	97%	90%	97%	96%
August 2016	98%	92%	92%	88%	92%
September 2016	97%	98%	84%	92%	93%
October 2016	99%	96%	78%	95%	93%
November 2016	96%	98%	88%	92%	93%
December 2016	100%	100%	85%	98%	97%
January 2017	98%	100%	87%	96%	96%
February 2017	100%	100%	90%	100%	98%
March 2017	99%	100%	88%	98%	97%
April 2017	98%	90%	79%	96%	94%
Target	95%	90%	80%	95%	90%

<b>Community Services Data</b>	April 2016	July 2016	August 2016	September 2016	October 2016	November 2016	December 2016	January 2017	February 2017	March 2017	April 2017
Number of Families Served in Post Adoption (in state)	37	62	64	66	70	66	66	66	65	66	67
Number of Children Served in Post Adoption (in state)	44	81	81	83	88	82	81	83	82	83	83
Number of Families Served by Head Start Coordinator		20	15	21	30	31	34	36	38	31	33
Number of Children Served by Head Start Coordinator		45	31	54	80	86	93	97	101	83	88
Number of Children Served by Safety Management Services Team	36	45	46	39	44	44	65	69	74	69	53
Number of Cases Served by Safety Management Services Team	11	20	21	18	21	23	26	25	27	25	21
Number of Children Served by Mobile Response Team	51	42	29	47	43	35	40	55	56	44	32
Number of Cribs for Kids Pack and Plays Distributed	14	29	24	38	27	39	14	22	18	33	26

## Community Services Outcomes 2016-17



	Safety Outcome	Wraparound Outcome	Natural Supports Outcome	Quality Assurance Outcome	Overall Outcome
April 2016	99%	91%	63%	90%	89%
July 2016	99%	95%	88%	97%	96%
August 2016	99%	97%	84%	91%	93%
September 2016	99%	100%	97%	99%	99%
October 2016	100%	100%	69%	98%	95%
November 2016	100%	100%	97%	99%	99%
December 2016	100%	100%	81%	98%	96%
January 2017	100%	100%	85%	98%	97%
February 2017	96%	97%	88%	93%	93%
March 2017	99%	100%	87%	98%	97%
April 2017	100%	98%	90%	100%	98%
Target	95%	90%	80%	95%	90%