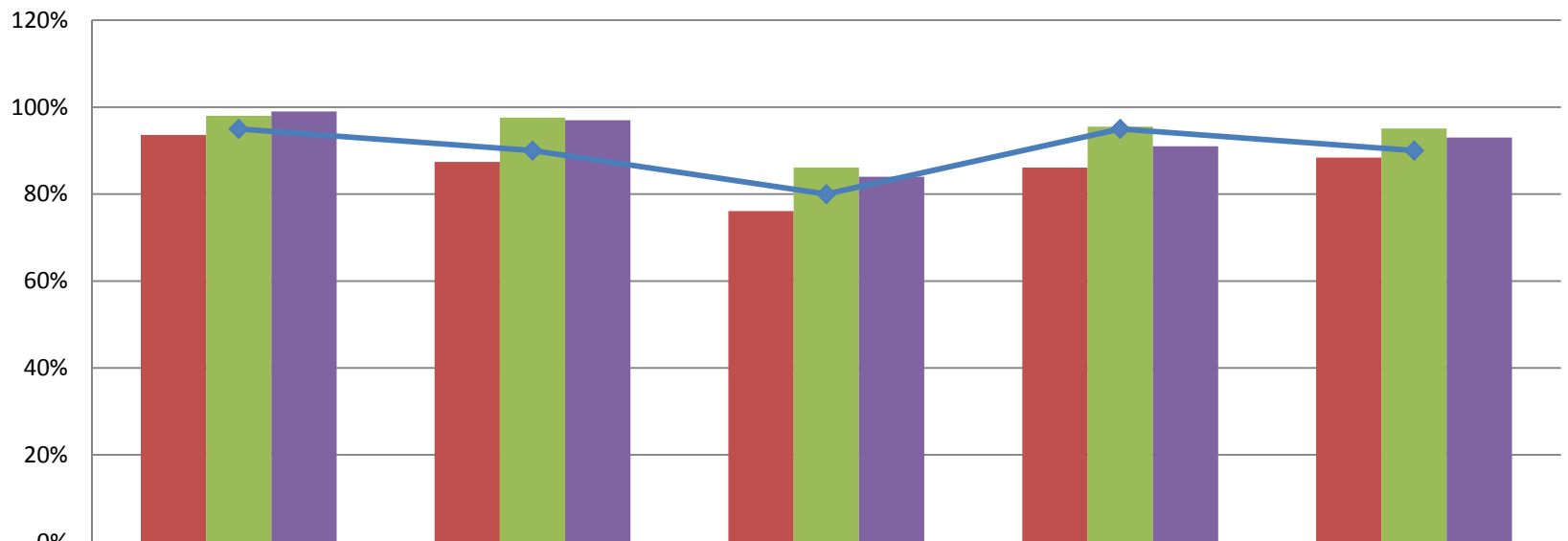




August 2016 Data Report

Brevard C.A.R.E.S. Data	August 2015	July 201	August
Total Number of Children Served by the Agency	1296	1489	1380
Total Number of Families Served by the Agency	594	675	618

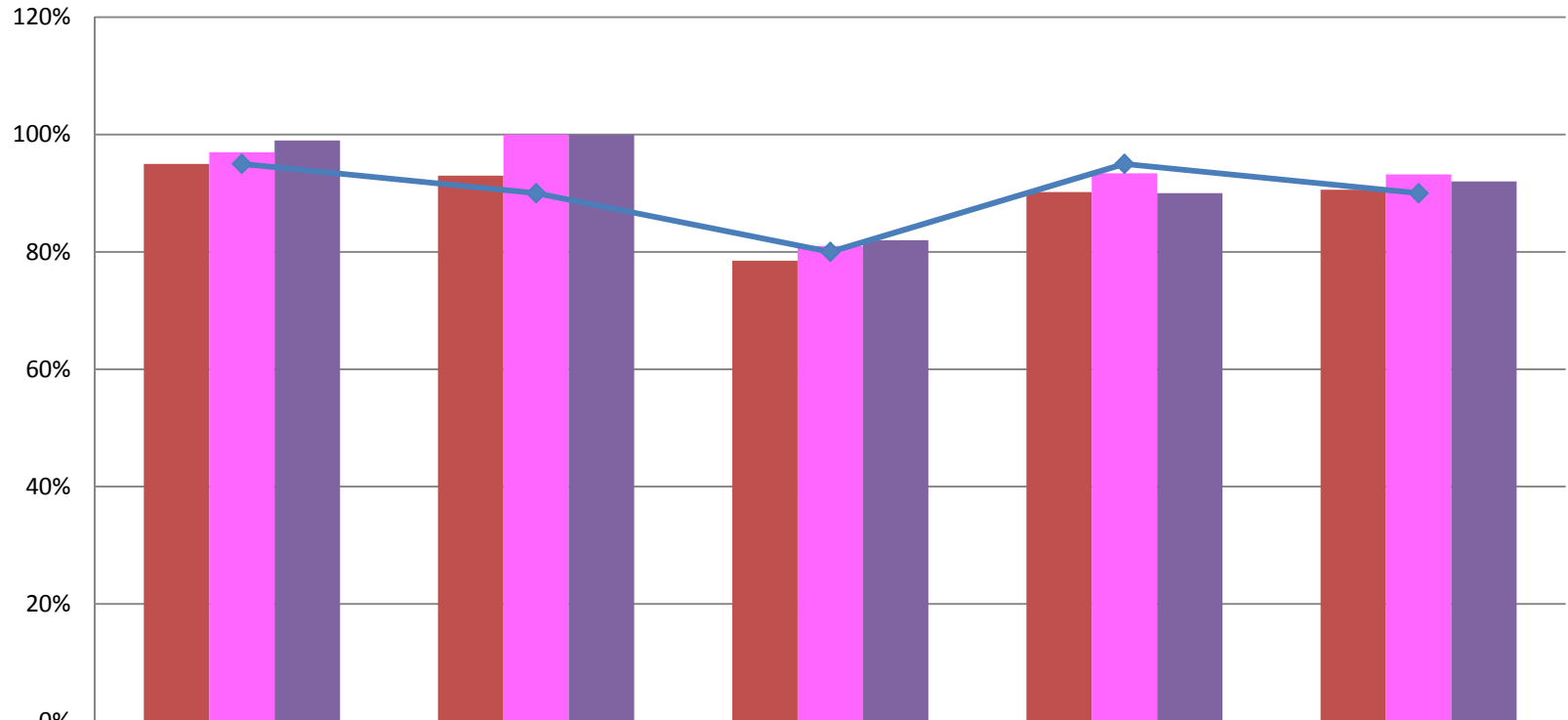
CARES OUTCOMES 2016-17 Qrt 1



	Safety Outcome	Wraparound Outcome	Natural Supports Outcome	Quality Assurance Outcome	Overall Outcome
■ August 2015	94%	87%	76%	86%	88%
■ July 2016	98%	98%	86%	96%	95%
■ August	99%	97%	84%	91%	93%
◆ Target	95%	90%	80%	95%	90%

Prevention Data	August 2015	Jul-16	August
Number of new Prevention cases	92	22	28
Number of new Prevention children		36	78
Number of Children Served in Prevention	1016	1135	1057
Number of Families Served in Prevention	462	491	446
DCF/Case Management Referrals	20	20	26
Self/Community/211 Referrals	71	1	2
Case Closure Reasons	August 2015	Jul-16	August
Total number of FSFN closures	141	64	170
Case Supervision Completed/ Outcomes Achieved		3	12
Service Provision Completed		25	55
Family Requests Services Close		0	8
Service Refused by Family/ no legal grounds		8	32
Other		12	27
Family Whereabout Unknown/ Reasonable Efforts		16	36
Caseload Data	August 2015	Jul-16	August
Monthly Average Per Care Coordinator (# of Families)	39	55	55
Monthly Average Per Family Partner (# of Families)	33	72	58
Average length of Participation	170	177	161
Percent of Families with a Transition Plan	47%	75%	75%

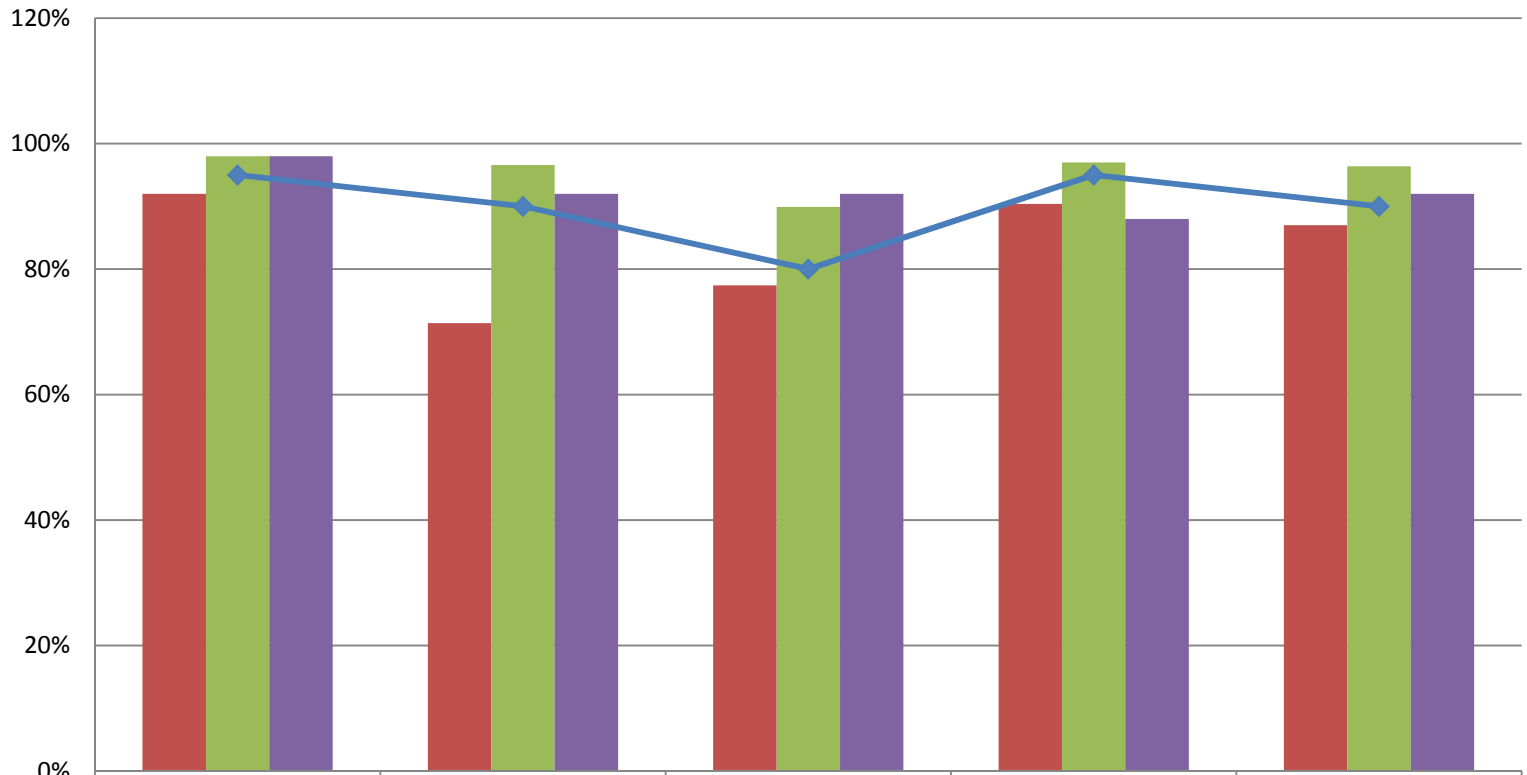
Prevention Outcomes 2016-17 Qrt 1



	Safety Outcome	Wraparound Outcome	Natural Supports Outcome	Quality Assurance Outcome	Overall Outcome
Oct-15	95%	93%	79%	90%	91%
July 2016	97%	100%	81%	93%	93%
August	99%	100%	82%	90%	92%
Target	95%	90%	80%	95%	90%

Child Welfare Team Data	August 2015	Jul-16	August
Number of new NJIHS cases	8	15	13
Number of new NJIHS children		25	24
Number of Families Served in Non Judicial In Home Services	74	102	92
Number of Children Served in Non Judicial In Home Services	166	228	209
Case Closure Reasons	August 2015	Jul-16	August
Total number of FSFN closures	4	9	8
Case Supervision Completed/ Outcomes Achieved		6	5
Service Provision Completed		0	2
Family Requests Services Close		0	0
Other		3	1
Caseload Data	August 2015	Jul-16	August
Monthly Average of Families Per Care Coordinator	16	17	15
Monthly Average of Children Per Care Coordinator	38	38	35
Average length of Participation	158	111	116
Percentage of Home Visits Completed Timely for the Month		84%	97%
Percentage Approved Ongoing Family Functioning Assessment		49%	85%
Percent of Families with a Transition Plan	0%	50%	96%

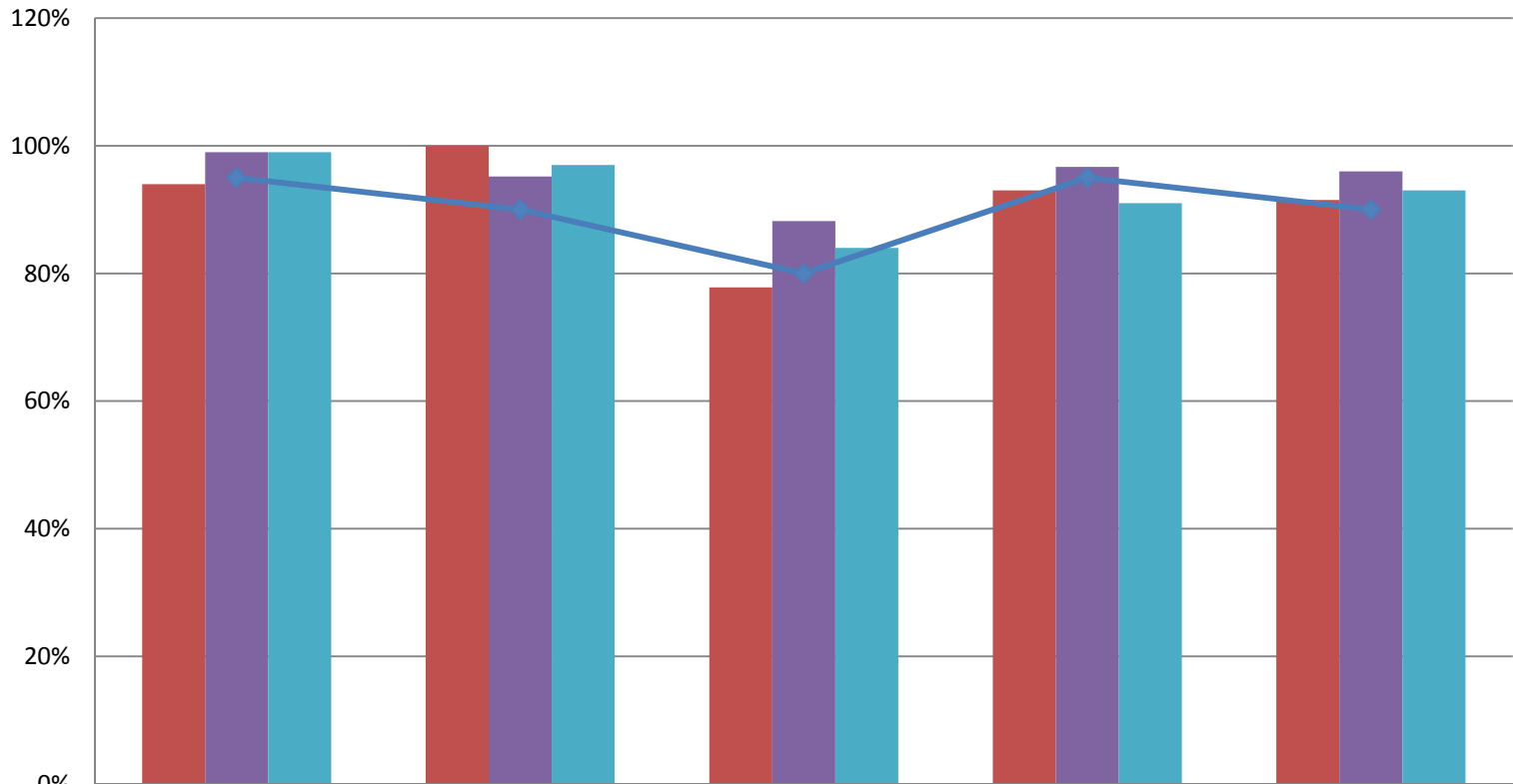
Child Welfare Outcomes 2016-17 Qrt 1



	Safety Outcome	Wraparound Outcome	Natural Supports Outcome	Quality Assurance Outcome	Overall Outcome
October 2015	92%	71%	77%	90%	87%
July 2016	98%	97%	90%	97%	96%
August	98%	92%	92%	88%	92%
Target	95%	90%	80%	95%	90%

Community Services Data	August 2015	Jul-16	August
Number of Families Served in Post Adoption (in state)	38	62	64
Number of Children Served in Post Adoption (in state)	54	81	81
Number of Families Served by Head Start Coordinator		20	15
Number of Children Served by Head Start Coordinator		45	31
Number of Children Served by Safety Management Services Team	27	45	46
Number of Cases Served by Safety Management Services Team	8	20	21
Number of Children Served by Mobile Response Team	40	42	29
Number of Cribs for Kids Pack and Plays Distributed	28	29	24

Community Services Outcomes 2016 Qrt 1



	Safety Outcome	Wraparound Outcome	Natural Supports Outcome	Quality Assurance Outcome	Overall Outcome
October 2016	94%	100%	78%	93%	92%
July 2016	99%	95%	88%	97%	96%
August	99%	97%	84%	91%	93%
Target	95%	90%	80%	95%	90%